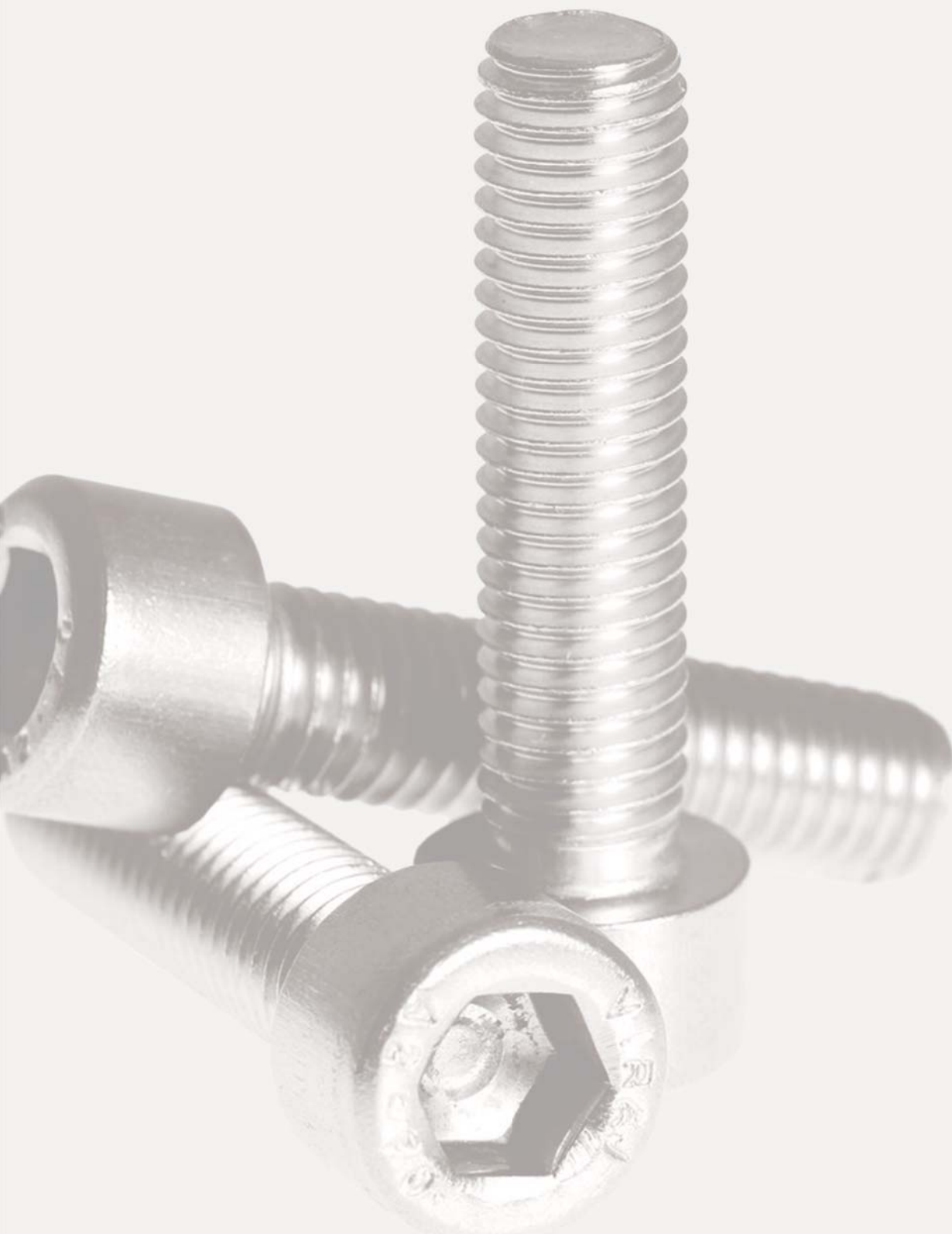


## **B SOCKET HEAD CAP SCREWS**

**BINNENZESKANTBOUTEN - TETE 6-PANS CREUX - INNENSECHSKANTSCHRAUBEN**

















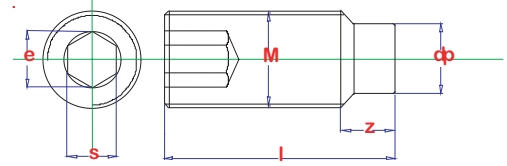


## HEX. SOCKET SET SCREW WITH DOG POINT

## STELSCHROEF BZK TAP

## VIS SANS TETE À SIX PANS CREUX À TÉTON

## GEWINDESTIFTE MIT INNENSECHSKANT UND ZAPFEN



B



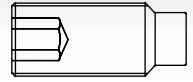
<b>material</b> : Steel 45H	<b>materiaal</b> : Staal 45H	<b>matière</b> : Acier 45H	<b>Werkstoff</b> : Stahl 45H
<b>type</b> : standard	<b>type</b> : standaard	<b>type</b> : standard	<b>Typ</b> : normalmass
<b>surface</b> : plain	<b>oppervlak</b> : blank	<b>surface</b> : brut	<b>Oberfläche</b> : roh

### Technical properties / Technische gegevens / Données techniques / Technische Daten

M	dp max	e min.	s max.	z max.
M 3	2	1.73	1.545	1.75
M 4	2.5	2.3	2.045	2.25
M 5	3.5	2.87	2.56	2.75
M 6	4	3.44	3.08	3.25
M 8	5.5	4.58	4.095	4.3
M 10	7	5.72	5.095	5.3
M 12	8.5	6.86	6.085	6.3

M x l	art code	EAN	BOX	KG/ BOX
3 x 5	00915,03005 SS	5410439045933	200	1,12
3 x 6	00915,03006 SS	5410439045940	200	0,36
3 x 8	00915,03008 SS	5410439045957	200	0,68
3 x 10	00915,03010 SS	5410439045964	200	0,52
3 x 12	00915,03012 SS	5410439045971	200	0,60
3 x 16	00915,03016 SS	5410439045988	200	16,00
3 x 20	00915,03020 SS	5410439045995	200	8,00
4 x 6	00915,04006 SS	5410439046039	200	16,00
4 x 8	00915,04008 SS	5410439046046	200	16,00
4 x 10	00915,04010 SS	5410439046053	200	16,00
4 x 12	00915,04012 SS	5410439046060	200	12,00
4 x 16	00915,04016 SS	5410439046077	200	16,00
4 x 20	00915,04020 SS	5410439046084	200	1,24
4 x 25	00915,04025 SS	5410439046091	200	1,60
5 x 6	00915,05006 SS	5410439046138	200	16,00
5 x 8	00915,05008 SS	5410439046145	200	19,00
5 x 10	00915,05010 SS	5410439046152	200	23,00
5 x 12	00915,05012 SS	5410439046169	200	33,00
5 x 16	00915,05016 SS	5410439046176	200	18,00
5 x 20	00915,05020 SS	5410439046183	200	22,00
5 x 25	00915,05025 SS	5410439046190	200	28,00

M x l	art code	EAN	BOX	KG/ BOX
5 x 30	00915,05030 SS	5410439046206	200	33,00
5 x 35	00915,05035 SS	5410439046213	200	1,08
6 x 6	00915,06006 SS	5410439187534	200	41,00
6 x 8	00915,06008 SS	5410439046251	200	22,00
6 x 10	00915,06010 SS	5410439046268	200	22,00
6 x 12	00915,06012 SS	5410439046275	200	22,00
6 x 16	00915,06016 SS	5410439046282	200	25,00
6 x 20	00915,06020 SS	5410439046299	200	0,60
6 x 25	00915,06025 SS	5410439046305	200	0,64
6 x 30	00915,06030 SS	5410439046312	200	0,72
6 x 35	00915,06035 SS	5410439046329	200	0,88
8 x 8	00915,08008 SS	5410439455947	200	0,88
8 x 10	00915,08010 SS	5410439046374	200	1,08
8 x 12	00915,08012 SS	5410439046381	200	1,20
8 x 16	00915,08016 SS	5410439046398	200	1,24
8 x 20	00915,08020 SS	5410439046404	200	1,40
8 x 25	00915,08025 SS	5410439046411	200	0,48
8 x 30	00915,08030 SS	5410439046428	200	0,52
8 x 35	00915,08035 SS	5410439046435	200	0,60
8 x 40	00915,08040 SS	5410439046442	200	0,60
8 x 45	00915,08045 SS	5410439046459	200	0,76



<b>material</b> : Steel 45H <b>type</b> : standard <b>surface</b> : plain	<b>materiaal</b> : Staal 45H <b>type</b> : standaard <b>oppervlak</b> : blank	<b>matière</b> : Acier 45H <b>type</b> : standard <b>surface</b> : brut	<b>Werkstoff</b> : Stahl 45H <b>Typ</b> : normalmass <b>Oberfläche</b> : roh
---	---	---	--

**B**

M x l	art code	EAN	BOX	KG/ BOX
8 x 50	00915,08050 SS	5410439046466	200	0,36
8 x 60	00915,08060 SS	5410439046473	200	0,88
10 x 10	00915,10010 SS	5410439116459	200	0,44
10 x 12	00915,10012 SS	5410439046503	200	0,48
10 x 16	00915,10016 SS	5410439046510	200	0,56
10 x 20	00915,10020 SS	5410439046527	200	1,20
10 x 25	00915,10025 SS	5410439046534	200	0,68
10 x 30	00915,10030 SS	5410439046541	200	0,48
10 x 35	00915,10035 SS	5410439046558	200	0,36
10 x 40	00915,10040 SS	5410439046565	200	0,40

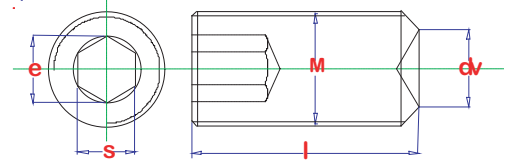
M x l	art code	EAN	BOX	KG/ BOX
10 x 45	00915,10045 SS	5410439046572	200	0,56
10 x 50	00915,10050 SS	5410439046589	200	0,52
10 x 80	00915,10080 SS	5410439046619	200	2,92
12 x 20	00915,12020 SS	5410439046664	200	0,68
12 x 25	00915,12025 SS	5410439046671	200	0,84
12 x 30	00915,12030 SS	5410439046688	200	1,00
12 x 40	00915,12040 SS	5410439046701	200	0,40
12 x 50	00915,12050 SS	5410439046725	200	0,56
12 x 60	00915,12060 SS	5410439046732	200	2,76

## HEX. SOCKET SET SCREW WITH CUP POINT

## STELSCHROEF BZK KRATEREIND

## VIS SANS TETE À SIX PANS CREUX À CUVETTE

## GEWINDESTIFTE MIT INNENSECHSKANT UND RINGSCHNEIDE



B



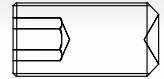
<b>material</b> : Steel 45H	<b>materiaal</b> : Staal 45H	<b>matière</b> : Acier 45H	<b>Werkstoff</b> : Stahl 45H
<b>type</b> : standard	<b>type</b> : standaard	<b>type</b> : standard	<b>Typ</b> : normalmass
<b>surface</b> : plain	<b>oppervlak</b> : blank	<b>surface</b> : brut	<b>Oberfläche</b> : roh

### Technical properties / Technische gegevens / Données techniques / Technische Daten

M	dv max.	e min.	s max.
M 3	1.4	1.73	1.545
M 4	2	2.3	2.045
M 5	2.5	2.87	2.56
M 6	3	3.44	3.08
M 8	5	4.58	4.095
M 10	6	5.72	5.095
M 12	8	6.86	6.085
M 16	10	9.15	8.115

M x l	art code	EAN	BOX	KG/ BOX
3 x 3	00916,03003 SS	5410439116473	200	0,56
3 x 4	00916,03004 SS	5410439047289	200	1,60
3 x 5	00916,03005 SS	5410439047302	200	1,84
3 x 6	00916,03006 SS	5410439047326	200	2,28
3 x 8	00916,03008 SS	5410439047340	200	2,52
3 x 10	00916,03010 SS	5410439047364	200	3,24
3 x 12	00916,03012 SS	5410439047388	200	1,28
3 x 16	00916,03016 SS	5410439047425	200	1,24
3 x 20	00916,03020 SS	5410439047449	200	0,60
3 x 25	00916,03025 SS	5410439047463	200	0,64
3 x 30	00916,03030 SS	5410439047470	200	1,52
4 x 4	00916,04004 SS	5410439047494	200	1,92
4 x 5	00916,04005 SS	5410439047524	200	2,24
4 x 6	00916,04006 SS	5410439047555	200	0,48
4 x 8	00916,04008 SS	5410439047586	200	0,36
4 x 10	00916,04010 SS	5410439047616	200	1,68
4 x 12	00916,04012 SS	5410439047647	200	1,28
4 x 16	00916,04016 SS	5410439047692	200	1,44
4 x 20	00916,04020 SS	5410439047722	200	4,48
4 x 25	00916,04025 SS	5410439047753	200	0,80

M x l	art code	EAN	BOX	KG/ BOX
4 x 30	00916,04030 SS	5410439047777	200	0,52
4 x 40	00916,04040 SS	5410439047791	200	1,88
5 x 4	00916,05004 SS	5410439413954	200	2,40
5 x 5	00916,05005 SS	5410439047814	200	0,60
5 x 6	00916,05006 SS	5410439047845	200	0,80
5 x 8	00916,05008 SS	5410439047876	200	1,16
5 x 10	00916,05010 SS	5410439047906	200	2,12
5 x 12	00916,05012 SS	5410439047937	200	1,52
5 x 16	00916,05016 SS	5410439047982	200	2,12
5 x 20	00916,05020 SS	5410439048019	200	2,40
5 x 25	00916,05025 SS	5410439048040	200	0,20
5 x 30	00916,05030 SS	5410439048071	200	0,40
5 x 35	00916,05035 SS	5410439048088	200	0,72
5 x 40	00916,05040 SS	5410439048095	200	2,28
5 x 45	00916,05045 SS	5410439048101	200	0,32
5 x 50	00916,05050 SS	5410439048118	200	0,36
6 x 5	00916,06005 SS	5410439048125	200	0,44
6 x 6	00916,06006 SS	5410439048156	200	1,00
6 x 8	00916,06008 SS	5410439048187	200	1,04
6 x 10	00916,06010 SS	5410439048217	200	3,36



<b>material</b> : Steel 45H	<b>materiaal</b> : Staal 45H	<b>matière</b> : Acier 45H	<b>Werkstoff</b> : Stahl 45H
<b>type</b> : standard	<b>type</b> : standaard	<b>type</b> : standard	<b>Typ</b> : normalmass
<b>surface</b> : plain	<b>oppervlak</b> : blank	<b>surface</b> : brut	<b>Oberfläche</b> : roh

**B**

M x l	art code	EAN	BOX	KG/ BOX
6 x 12	00916,06012 SS	5410439048248	200	1,00
6 x 16	00916,06016 SS	5410439116480	200	0,92
6 x 20	00916,06020 SS	5410439048323	200	1,36
6 x 25	00916,06025 SS	5410439048354	200	1,84
6 x 30	00916,06030 SS	5410439048385	200	0,96
6 x 35	00916,06035 SS	5410439048408	200	4,08
6 x 40	00916,06040 SS	5410439048439	200	2,80
6 x 45	00916,06045 SS	5410439048446	200	0,56
6 x 50	00916,06050 SS	5410439048453	200	0,80
6 x 60	00916,06060 SS	5410439151641	200	0,72
8 x 6	00916,08006 SS	5410439048460	200	0,40
8 x 8	00916,08008 SS	5410439048491	200	2,44
8 x 10	00916,08010 SS	5410439048521	200	0,28
8 x 12	00916,08012 SS	5410439048552	200	2,92
8 x 16	00916,08016 SS	5410439048590	200	0,52
8 x 20	00916,08020 SS	5410439048620	200	3,16
8 x 25	00916,08025 SS	5410439048651	200	1,28
8 x 30	00916,08030 SS	5410439048682	200	0,92
8 x 35	00916,08035 SS	5410439048712	200	1,92
8 x 40	00916,08040 SS	5410439048743	200	0,36
8 x 45	00916,08045 SS	5410439048767	200	1,80
8 x 50	00916,08050 SS	5410439048781	200	0,84
8 x 60	00916,08060 SS	5410439048798	200	1,04
8 x 70	00916,08070 SS	5410439187541	200	0,64
8 x 80	00916,08080 SS	5410439187558	200	0,48
10 x 8	00916,10008 SS	5410439048804	200	0,56
10 x 10	00916,10010 SS	5410439048828	200	1,16
10 x 12	00916,10012 SS	5410439048859	200	0,40
10 x 16	00916,10016 SS	5410439048880	200	1,52
10 x 20	00916,10020 SS	5410439048910	200	0,72
10 x 25	00916,10025 SS	5410439048941	200	1,08
10 x 30	00916,10030 SS	5410439048972	200	0,88

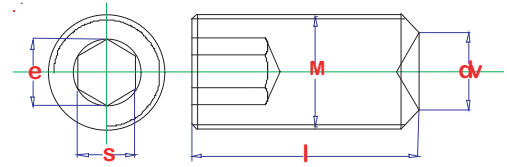
M x l	art code	EAN	BOX	KG/ BOX
10 x 35	00916,10035 SS	5410439049009	200	1,16
10 x 40	00916,10040 SS	5410439049030	200	1,40
10 x 45	00916,10045 SS	5410439049054	200	1,56
10 x 50	00916,10050 SS	5410439049078	200	1,84
10 x 60	00916,10060 SS	5410439049085	200	0,48
10 x 70	00916,10070 SS	5410439116503	200	0,40
10 x 80	00916,10080 SS	5410439116510	200	0,84
10 x 90	00916,10090 SS	5410439169202	200	0,52
10 x 100	00916,10100 SS	5410439169219	200	0,60
12 x 12	00916,12012 SS	5410439049115	200	2,28
12 x 16	00916,12016 SS	5410439049153	200	1,36
12 x 20	00916,12020 SS	5410439049184	200	2,16
12 x 25	00916,12025 SS	5410439049214	200	0,88
12 x 30	00916,12030 SS	5410439049245	200	4,28
12 x 35	00916,12035 SS	5410439049276	200	1,84
12 x 40	00916,12040 SS	5410439049306	200	3,04
12 x 45	00916,12045 SS	5410439049320	200	2,52
12 x 50	00916,12050 SS	5410439049344	200	1,32
12 x 60	00916,12060 SS	5410439049351	200	3,72
12 x 70	00916,12070 SS	5410439116527	200	0,72
12 x 80	00916,12080 SS	5410439116534	200	0,60
16 x 16	00916,16016 SS	5410439116657	100	1,40
16 x 20	00916,16020 SS	5410439116664	100	1,76
16 x 25	00916,16025 SS	5410439116671	100	2,72
16 x 30	00916,16030 SS	5410439116688	100	0,44
16 x 35	00916,16035 SS	5410439116695	50	0,68
16 x 40	00916,16040 SS	5410439116701	50	0,40
16 x 50	00916,16050 SS	5410439116725	50	0,72
16 x 60	00916,16060 SS	5410439116732	50	0,60
16 x 70	00916,16070 SS	5410439116749	25	0,68
16 x 80	00916,16080 SS	5410439116756	25	0,56
16 x 100	00916,16100 SS	5410439116770	25	0,76

## HEX. SOCKET SET SCREW WITH CUP POINT

## STELSCHROEF BZK KRATEREIND

## VIS SANS TETE À SIX PANS CREUX À CUVETTE

## GEWINDESTIFTE MIT INNENSECHSKANT UND RINGSCHNEIDE



B



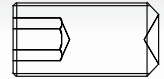
<b>material</b> : Stainless steel A2	<b>materiaal</b> : Inox A2	<b>matière</b> : Inox A2	<b>Werkstoff</b> : Edelstahl A2
<b>type</b> : standard	<b>type</b> : standaard	<b>type</b> : standard	<b>Typ</b> : normalmass
<b>surface</b> : plain	<b>oppervlak</b> : blank	<b>surface</b> : brut	<b>Oberfläche</b> : roh

### Technical properties / Technische gegevens / Données techniques / Technische Daten

M	dv max.	e min.	s max.
M 3	1.4	1.73	1.545
M 4	2	2.3	2.045
M 5	2.5	2.87	2.56
M 6	3	3.44	3.08
M 8	5	4.58	4.095
M 10	6	5.72	5.095
M 12	8	6.86	6.085

M x l	art code	EAN	BOX	KG/ BOX
3 x 4	00916,03004 A2	5410439110020	200	0,63
3 x 5	00916,03005 A2	5410439116992	200	0,64
3 x 6	00916,03006 A2	5410439117005	200	0,64
3 x 8	00916,03008 A2	5410439117012	200	0,62
3 x 10	00916,03010 A2	5410439307475	200	0,64
3 x 12	00916,03012 A2	5410439117029	200	1,12
3 x 16	00916,03016 A2	5410439117036	200	0,64
3 x 20	00916,03020 A2	5410439117043	200	1,24
3 x 25	00916,03025 A2	5410439117050	200	1,24
4 x 4	00916,04004 A2	5410439047487	200	0,61
4 x 5	00916,04005 A2	5410439047517	200	0,64
4 x 6	00916,04006 A2	5410439047548	200	0,64
4 x 8	00916,04008 A2	5410439047579	200	0,64
4 x 10	00916,04010 A2	5410439047609	200	1,80
4 x 12	00916,04012 A2	5410439047630	200	0,62
4 x 16	00916,04016 A2	5410439047685	200	0,64
4 x 20	00916,04020 A2	5410439047715	200	0,57
4 x 25	00916,04025 A2	5410439047746	200	2,60
4 x 30	00916,04030 A2	5410439153959	200	
5 x 5	00916,05005 A2	5410439047807	200	
5 x 6	00916,05006 A2	5410439047838	200	3,16

M x l	art code	EAN	BOX	KG/ BOX
5 x 8	00916,05008 A2	5410439047869	200	0,64
5 x 10	00916,05010 A2	5410439305907	200	0,64
5 x 12	00916,05012 A2	5410439047920	200	0,64
5 x 16	00916,05016 A2	5410439047975	200	0,64
5 x 20	00916,05020 A2	5410439048002	200	0,64
5 x 25	00916,05025 A2	5410439048033	200	0,64
5 x 30	00916,05030 A2	5410439048064	200	0,64
6 x 6	00916,06006 A2	5410439048149	200	
6 x 8	00916,06008 A2	5410439048170	200	0,63
6 x 10	00916,06010 A2	5410439048200	200	
6 x 12	00916,06012 A2	5410439048231	200	
6 x 16	00916,06016 A2	5410439048286	200	0,64
6 x 20	00916,06020 A2	5410439048316	200	0,64
6 x 25	00916,06025 A2	5410439048347	200	0,64
6 x 30	00916,06030 A2	5410439048378	200	0,64
6 x 35	00916,06035 A2	5410439153843	200	6,72
6 x 40	00916,06040 A2	5410439048422	200	
6 x 50	00916,06050 A2	5410439153850	200	8,20
6 x 60	00916,06060 A2	5410439153867	200	2,72
8 x 8	00916,08008 A2	5410439048484	200	2,92
8 x 10	00916,08010 A2	5410439048514	200	1,72



<b>material</b> : Stainless steel A2 <b>type</b> : standard <b>surface</b> : plain	<b>materiaal</b> : Inox A2 <b>type</b> : standaard <b>oppervlak</b> : blank	<b>matière</b> : Inox A2 <b>type</b> : standard <b>surface</b> : brut	<b>Werkstoff</b> : Edelstahl A2 <b>Typ</b> : normalmass <b>Oberfläche</b> : roh
--	---	---	---

**B**

M x l	art code	EAN	BOX	KG/ BOX
8 x 12	00916,08012 A2	5410439048545	200	0,64
8 x 16	00916,08016 A2	5410439048583	200	0,65
8 x 20	00916,08020 A2	5410439048613	200	0,64
8 x 25	00916,08025 A2	5410439048644	200	0,63
8 x 30	00916,08030 A2	5410439048675	200	0,64
8 x 35	00916,08035 A2	5410439048705	200	0,63
8 x 40	00916,08040 A2	5410439048736	200	0,64
8 x 45	00916,08045 A2	5410439153799	200	3,76
8 x 50	00916,08050 A2	5410439048774	200	3,68
10 x 10	00916,10010 A2	5410439048811	200	0,64
10 x 12	00916,10012 A2	5410439048842	200	0,63
10 x 16	00916,10016 A2	5410439048873	200	0,64
10 x 20	00916,10020 A2	5410439048903	200	0,63
10 x 25	00916,10025 A2	5410439048934	200	0,64

M x l	art code	EAN	BOX	KG/ BOX
10 x 30	00916,10030 A2	5410439048965	200	0,64
10 x 35	00916,10035 A2	5410439048996	100	0,63
10 x 40	00916,10040 A2	5410439049023	100	0,65
10 x 45	00916,10045 A2	5410439153744	100	2,39
10 x 50	00916,10050 A2	5410439049061	100	4,32
12 x 12	00916,12012 A2	5410439049108	200	0,64
12 x 16	00916,12016 A2	5410439049146	200	0,64
12 x 20	00916,12020 A2	5410439049177	200	0,64
12 x 25	00916,12025 A2	5410439049207	100	2,04
12 x 30	00916,12030 A2	5410439049238	100	0,64
12 x 35	00916,12035 A2	5410439049269	100	5,04
12 x 40	00916,12040 A2	5410439049290	100	6,12
12 x 45	00916,12045 A2	5410439153713	100	3,16
12 x 50	00916,12050 A2	5410439049337	100	2,28

Din 912 (12/1983) \*

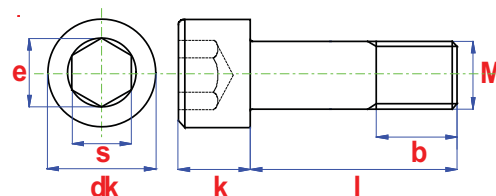
EN 4762 (06/2004) \*\*

CAP HEAD SCREW HEXAGON SOCKET

BINNENZESKANTBOUT MET CIL.KOP

VIS TETE CYLINDRIQUE À SIX PANS CREUX

INNENSECHSKANTSCHRAUBE MIT ZYLINDERKOPF



B



<b>material</b> : Steel 8.8	<b>materiaal</b> : Staal 8.8	<b>matière</b> : Acier 8.8	<b>Werkstoff</b> : Stahl 8.8
<b>type</b> : standard	<b>type</b> : standaard	<b>type</b> : standard	<b>Typ</b> : normalmass
<b>surface</b> : plain	<b>oppervlak</b> : blank	<b>surface</b> : brut	<b>Oberfläche</b> : roh

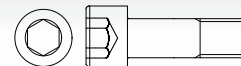
Technical properties / Technische gegevens / Données techniques / Technische Daten

M	b	dk max.	e min.	k max.	s max.
M 3	18	5.5	2.87	3	2.58
M 4	20	7	3.44	4	3.08
M 5	22	8.5	4.58	5	4.095
M 6	24	10	5.72	6	5.14
M 8	28	13	6.86	8	6.14
M 10	32	16	9.15	10	8.175
M 12	36	18	11.43	12	10.175
M 14	40	21	13.72	14	12.212
M 16	44	24	16	16	14.212
M 18	48	27	16	18	
M 20	52	30	19.44	20	17.23
M 24	60	36	21.73	24	19.275

\* Cancelled since 11/1997 \*\* Identical interchangeable  
 \* Vervallen vanaf 11/1997 \*\* Identiek uitwisselbaar  
 \* Retiré à partir de 11/1997 \*\* Identique  
 \* Storniert ab 11/1997 \*\* Identisch austauschbar

M x l	art code	EAN	BOX	KG/ BOX
3 x 6	00912,03006 S	5410439114332	500	1,92
3 x 8	00912,03008 S	5410439114349	500	0,92
3 x 10	00912,03010 S	5410439305242	500	1,39
3 x 12	00912,03012 S	5410439114356	500	1,39
3 x 16	00912,03016 S	5410439114363	500	2,25
3 x 20	00912,03020 S	5410439114370	500	1,39
3 x 25	00912,03025 S	5410439114387	500	
3 x 30	00912,03030 S	5410439114394	500	0,16
3 x 35	00912,03035 S	5410439114400	500	0,32
3 x 40	00912,03040 S	5410439114417	500	0,48
4 x 6	00912,04006 S	5410439114455	500	2,50
4 x 8	00912,04008 S	5410439038126	500	
4 x 10	00912,04010 S	5410439038157	500	0,04
4 x 12	00912,04012 S	5410439038195	500	1,29
4 x 16	00912,04016 S	5410439038232	500	
4 x 20	00912,04020 S	5410439038270	500	0,12
4 x 25	00912,04025 S	5410439038317	500	2,92

M x l	art code	EAN	BOX	KG/ BOX
4 x 30	00912,04030 S	5410439038355	500	0,25
4 x 35	00912,04035 S	5410439038393	500	0,32
4 x 40	00912,04040 S	5410439038430	500	0,32
4 x 45	00912,04045 S	5410439038461	500	0,01
4 x 50	00912,04050 S	5410439114462	500	1,00
5 x 6	00912,05006 S	5410439107327	500	1,00
5 x 8	00912,05008 S	5410439038478	500	0,44
5 x 10	00912,05010 S	5410439038508	500	3,01
5 x 12	00912,05012 S	5410439038546	500	0,20
5 x 16	00912,05016 S	5410439038584	500	0,25
5 x 20	00912,05020 S	5410439038621	500	0,44
5 x 25	00912,05025 S	5410439038669	500	0,52
5 x 30	00912,05030 S	5410439038706	200	1,07
5 x 35	00912,05035 S	5410439038744	200	0,12
5 x 40	00912,05040 S	5410439038782	200	0,92
5 x 45	00912,05045 S	5410439038812	200	7,90
5 x 50	00912,05050 S	5410439038850	200	0,93

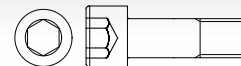


<b>material</b> : Steel 8.8	<b>materiaal</b> : Staal 8.8	<b>matière</b> : Acier 8.8	<b>Werkstoff</b> : Stahl 8.8
<b>type</b> : standard	<b>type</b> : standaard	<b>type</b> : standard	<b>Typ</b> : normalmass
<b>surface</b> : plain	<b>oppervlak</b> : blank	<b>surface</b> : brut	<b>Oberfläche</b> : roh

M x l	art code	EAN	BOX	KG/ BOX
5 x 60	00912,05060 S	5410439038874	200	1,39
6 x 6	00912,06006 S	5410439114479	200	0,74
6 x 8	00912,06008 S	5410439038911	500	0,32
6 x 10	00912,06010 S	5410439038935	500	0,21
6 x 12	00912,06012 S	5410439038973	500	0,22
6 x 16	00912,06016 S	5410439039017	500	0,23
6 x 20	00912,06020 S	5410439039055	500	0,25
6 x 25	00912,06025 S	5410439039093	500	
6 x 30	00912,06030 S	5410439039130	500	1,15
6 x 35	00912,06035 S	5410439039178	200	1,92
6 x 40	00912,06040 S	5410439039215	200	0,32
6 x 45	00912,06045 S	5410439039246	200	0,01
6 x 50	00912,06050 S	5410439039284	200	5,12
6 x 55	00912,06055 S	5410439039314	200	0,37
6 x 60	00912,06060 S	5410439039338	200	5,20
6 x 65	00912,06065 S	5410439165495	200	0,01
6 x 70	00912,06070 S	5410439039369	200	0,36
6 x 80	00912,06080 S	5410439039390	200	0,16
6 x 90	00912,06090 S	5410439039413	100	0,01
6 x 100	00912,06100 S	5410439039437	100	4,24
6 x 110	00912,06110 S	5410439114486	100	
6 x 120	00912,06120 S	5410439114493	100	0,64
8 x 10	00912,08010 S	5410439039451	200	3,80
8 x 12	00912,08012 S	5410439039475	200	4,94
8 x 16	00912,08016 S	5410439039505	200	6,36
8 x 20	00912,08020 S	5410439039543	200	6,76
8 x 25	00912,08025 S	5410439039581	200	1,70
8 x 30	00912,08030 S	5410439039628	200	2,01
8 x 35	00912,08035 S	5410439039666	200	1,92
8 x 40	00912,08040 S	5410439039703	200	2,02
8 x 45	00912,08045 S	5410439039734	200	0,56
8 x 50	00912,08050 S	5410439039772	200	
8 x 55	00912,08055 S	5410439039802	200	0,65
8 x 60	00912,08060 S	5410439039840	200	0,57
8 x 65	00912,08065 S	5410439165501	200	0,33
8 x 70	00912,08070 S	5410439039871	200	0,63
8 x 80	00912,08080 S	5410439039901	100	0,35
8 x 90	00912,08090 S	5410439039932	100	
8 x 100	00912,08100 S	5410439039956	100	
8 x 110	00912,08110 S	5410439114547	100	0,16
8 x 120	00912,08120 S	5410439114554	100	0,32
8 x 130	00912,08130 S	5410439114561	100	0,44
8 x 140	00912,08140 S	5410439114578	100	

M x l	art code	EAN	BOX	KG/ BOX
8 x 150	00912,08150 S	5410439114585	100	
10 x 16	00912,10016 S	5410439039970	200	6,44
10 x 20	00912,10020 S	5410439040013	200	0,92
10 x 25	00912,10025 S	5410439040051	200	1,35
10 x 30	00912,10030 S	5410439040099	200	
10 x 35	00912,10035 S	5410439040136	100	0,24
10 x 40	00912,10040 S	5410439040174	100	3,64
10 x 45	00912,10045 S	5410439040204	100	0,68
10 x 50	00912,10050 S	5410439040242	100	0,60
10 x 55	00912,10055 S	5410439040273	100	
10 x 60	00912,10060 S	5410439040310	100	1,16
10 x 65	00912,10065 S	5410439165518	100	1,16
10 x 70	00912,10070 S	5410439040358	100	0,20
10 x 80	00912,10080 S	5410439040389	100	0,25
10 x 90	00912,10090 S	5410439040419	100	
10 x 100	00912,10100 S	5410439040440	100	7,90
10 x 110	00912,10110 S	5410439040471	50	0,88
10 x 120	00912,10120 S	5410439040495	50	1,88
10 x 130	00912,10130 S	5410439114615	50	0,55
10 x 140	00912,10140 S	5410439114622	50	4,12
10 x 150	00912,10150 S	5410439114639	50	1,50
12 x 20	00912,12020 S	5410439040525	100	0,21
12 x 25	00912,12025 S	5410439040563	100	6,36
12 x 30	00912,12030 S	5410439040600	100	0,80
12 x 35	00912,12035 S	5410439040648	100	3,51
12 x 40	00912,12040 S	5410439040686	100	2,20
12 x 45	00912,12045 S	5410439040716	100	1,01
12 x 50	00912,12050 S	5410439040754	100	0,75
12 x 55	00912,12055 S	5410439040785	100	0,01
12 x 60	00912,12060 S	5410439040822	100	
12 x 65	00912,12065 S	5410439165525	50	0,60
12 x 70	00912,12070 S	5410439040860	50	1,05
12 x 80	00912,12080 S	5410439040891	50	1,27
12 x 90	00912,12090 S	5410439040921	50	1,34
12 x 100	00912,12100 S	5410439040952	50	0,92
12 x 110	00912,12110 S	5410439040983	50	0,43
12 x 120	00912,12120 S	5410439041010	50	2,30
12 x 130	00912,12130 S	5410439114653	50	
12 x 140	00912,12140 S	5410439114660	50	0,57
12 x 150	00912,12150 S	5410439114677	50	0,93
14 x 25	00912,14025 S	5410439041041	100	0,04
14 x 30	00912,14030 S	5410439041058	100	0,69
14 x 35	00912,14035 S	5410439041089	100	1,25





<b>material</b> : Steel 8.8	<b>materiaal</b> : Staal 8.8	<b>matière</b> : Acier 8.8	<b>Werkstoff</b> : Stahl 8.8
<b>type</b> : standard	<b>type</b> : standaard	<b>type</b> : standard	<b>Typ</b> : normalmass
<b>surface</b> : plain	<b>oppervlak</b> : blank	<b>surface</b> : brut	<b>Oberfläche</b> : roh

M x l	art code	EAN	BOX	KG/ BOX
14 x 40	00912,14040 S	5410439041119	50	0,66
14 x 45	00912,14045 S	5410439041140	50	1,63
14 x 50	00912,14050 S	5410439041171	50	0,44
14 x 55	00912,14055 S	5410439041201	50	1,40
14 x 60	00912,14060 S	5410439041232	50	0,61
14 x 65	00912,14065 S	5410439165532	50	
14 x 70	00912,14070 S	5410439041263	50	0,46
14 x 80	00912,14080 S	5410439041294	50	0,44
14 x 90	00912,14090 S	5410439041324	50	0,61
14 x 100	00912,14100 S	5410439041355	50	0,61
14 x 110	00912,14110 S	5410439115070	50	0,72
14 x 120	00912,14120 S	5410439115087	50	6,92
14 x 130	00912,14130 S	5410439115094	50	1,96
14 x 140	00912,14140 S	5410439115100	50	4,12
14 x 150	00912,14150 S	5410439115117	25	0,16
14 x 160	00912,14160 S	5410439115124	25	1,73
16 x 30	00912,16030 S	5410439041430	50	0,57
16 x 35	00912,16035 S	5410439041478	50	0,34
16 x 40	00912,16040 S	5410439041515	50	0,45
16 x 45	00912,16045 S	5410439041546	50	1,91
16 x 50	00912,16050 S	5410439041584	50	0,38
16 x 55	00912,16055 S	5410439041614	50	0,83
16 x 60	00912,16060 S	5410439041652	50	2,56
16 x 65	00912,16065 S	5410439041683	50	
16 x 70	00912,16070 S	5410439041713	50	0,46
16 x 80	00912,16080 S	5410439041751	50	0,15
16 x 90	00912,16090 S	5410439041782	50	0,85
16 x 100	00912,16100 S	5410439041812	50	0,16
16 x 110	00912,16110 S	5410439041843	50	2,24
16 x 120	00912,16120 S	5410439041874	50	1,76
16 x 130	00912,16130 S	5410439115155	25	0,76
16 x 140	00912,16140 S	5410439115162	25	1,41
16 x 150	00912,16150 S	5410439115179	25	0,06
16 x 160	00912,16160 S	5410439115186	25	0,27
18 x 50	00912,18050 S	5410439041904	25	1,61
18 x 55	00912,18055 S	5410439165556	25	0,62
18 x 60	00912,18060 S	5410439041911	25	1,03

M x l	art code	EAN	BOX	KG/ BOX
18 x 65	00912,18065 S	5410439165549	25	0,40
18 x 70	00912,18070 S	5410439041928	25	0,21
18 x 80	00912,18080 S	5410439041935	25	3,11
18 x 90	00912,18090 S	5410439115216	25	0,62
18 x 100	00912,18100 S	5410439041942	25	1,39
18 x 110	00912,18110 S	5410439115223	25	1,96
18 x 120	00912,18120 S	5410439115230	25	0,44
18 x 130	00912,18130 S	5410439115247	25	4,20
18 x 140	00912,18140 S	5410439115254	25	1,55
18 x 150	00912,18150 S	5410439115261	25	0,75
20 x 40	00912,20040 S	5410439041966	50	0,16
20 x 45	00912,20045 S	5410439041997	50	0,29
20 x 50	00912,20050 S	5410439042031	25	3,05
20 x 55	00912,20055 S	5410439042062	25	0,31
20 x 60	00912,20060 S	5410439042109	25	1,33
20 x 65	00912,20065 S	5410439165563	25	
20 x 70	00912,20070 S	5410439042147	25	0,23
20 x 80	00912,20080 S	5410439042185	25	0,31
20 x 90	00912,20090 S	5410439042215	25	0,08
20 x 100	00912,20100 S	5410439042246	25	
20 x 110	00912,20110 S	5410439042277	25	1,24
20 x 120	00912,20120 S	5410439042307	25	2,60
20 x 130	00912,20130 S	5410439115278	25	2,36
20 x 140	00912,20140 S	5410439115285	25	1,35
20 x 150	00912,20150 S	5410439115292	25	0,32
20 x 160	00912,20160 S	5410439115308	25	0,08
24 x 50	00912,24050 S	5410439042338	25	1,48
24 x 55	00912,24055 S	5410439042352	25	3,12
24 x 60	00912,24060 S	5410439042376	25	4,84
24 x 70	00912,24070 S	5410439042390	25	0,60
24 x 80	00912,24080 S	5410439042413	10	7,36
24 x 90	00912,24090 S	5410439042437	10	2,01
24 x 100	00912,24100 S	5410439042451	10	
24 x 110	00912,24110 S	5410439042475	10	3,11
24 x 120	00912,24120 S	5410439042499	10	0,32
24 x 140	00912,24140 S	5410439411998	10	0,89

B

Din 912 (12/1983) \*

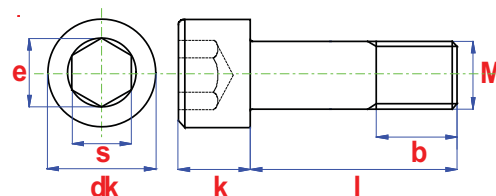
EN 4762 (06/2004) \*\*

CAP HEAD SCREW HEXAGON SOCKET

BINNENZESKANTBOUT MET CIL.KOP

VIS TETE CYLINDRIQUE À SIX PANS CREUX

INNENSECHSKANTSCHRAUBE MIT ZYLINDERKOPF



<b>material</b> : Steel 8.8	<b>materiaal</b> : Staal 8.8	<b>matière</b> : Acier 8.8	<b>Werkstoff</b> : Stahl 8.8
<b>type</b> : standard	<b>type</b> : standaard	<b>type</b> : standard	<b>Typ</b> : normalmass
<b>surface</b> : zinc plated	<b>oppervlak</b> : verzinkt	<b>surface</b> : zingué	<b>Oberfläche</b> : verzinkt

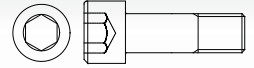
Technical properties / Technische gegevens / Données techniques / Technische Daten

M	b	dk max.	e min.	k max.	s max.
M 3	18	5.5	2.87	3	2.58
M 4	20	7	3.44	4	3.08
M 5	22	8.5	4.58	5	4.095
M 6	24	10	5.72	6	5.14
M 8	28	13	6.86	8	6.14
M 10	32	16	9.15	10	8.175
M 12	36	18	11.43	12	10.175
M 14	40	21	13.72	14	12.212
M 16	44	24	16	16	14.212
M 20	52	30	19.44	20	17.23

\* Cancelled since 11/1997 \*\* Identical interchangeable  
 \* Vervallen vanaf 11/1997 \*\* Identiek uitwisselbaar  
 \* Retiré à partir de 11/1997 \*\* Identique  
 \* Storniert ab 11/1997 \*\* Identisch austauschbar

M x l	art code	EAN	BOX	KG/ BOX
3 x 6	00912,03006 Z	5410439304931	500	
3 x 8	00912,03008 Z	5410439304979	500	0,52
3 x 10	00912,03010 Z	5410439306805	500	0,21
3 x 12	00912,03012 Z	5410439102247	500	0,60
3 x 16	00912,03016 Z	5410439102254	500	1,24
3 x 20	00912,03020 Z	5410439102261	500	2,44
3 x 25	00912,03025 Z	5410439102278	500	5,24
3 x 30	00912,03030 Z	5410439102285	500	7,64
3 x 35	00912,03035 Z	5410439165587	500	0,10
3 x 40	00912,03040 Z	5410439102315	500	3,64
4 x 5	00912,04005 Z	5410439165624	500	1,00
4 x 6	00912,04006 Z	5410439305389	500	0,65
4 x 8	00912,04008 Z	5410439038133	500	1,72
4 x 10	00912,04010 Z	5410439038171	500	0,24
4 x 12	00912,04012 Z	5410439038218	500	0,40
4 x 16	00912,04016 Z	5410439038256	500	0,44
4 x 20	00912,04020 Z	5410439038294	500	0,92
4 x 25	00912,04025 Z	5410439038331	500	1,88
4 x 30	00912,04030 Z	5410439038379	500	4,16

M x l	art code	EAN	BOX	KG/ BOX
4 x 35	00912,04035 Z	5410439038416	500	0,45
4 x 40	00912,04040 Z	5410439038454	500	1,36
4 x 45	00912,04045 Z	5410439165631	500	3,32
4 x 50	00912,04050 Z	5410439102346	500	2,08
5 x 6	00912,05006 Z	5410439104845	500	1,66
5 x 8	00912,05008 Z	5410439038485	500	6,00
5 x 10	00912,05010 Z	5410439038522	500	2,34
5 x 12	00912,05012 Z	5410439038560	500	0,78
5 x 16	00912,05016 Z	5410439038607	500	1,13
5 x 20	00912,05020 Z	5410439038645	500	1,48
5 x 25	00912,05025 Z	5410439038683	500	0,66
5 x 30	00912,05030 Z	5410439038720	200	0,20
5 x 35	00912,05035 Z	5410439038768	200	0,26
5 x 40	00912,05040 Z	5410439038805	200	0,63
5 x 45	00912,05045 Z	5410439038836	200	0,23
5 x 50	00912,05050 Z	5410439038867	200	3,50
5 x 60	00912,05060 Z	5410439038881	200	10,00
5 x 70	00912,05070 Z	5410439038904	200	2,15
5 x 80	00912,05080 Z	5410439114738	200	1,55

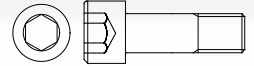


<b>material</b> : Steel 8.8	<b>materiaal</b> : Staal 8.8	<b>matière</b> : Acier 8.8	<b>Werkstoff</b> : Stahl 8.8
<b>type</b> : standard	<b>type</b> : standaard	<b>type</b> : standard	<b>Typ</b> : normalmass
<b>surface</b> : zinc plated	<b>oppervlak</b> : verzinkt	<b>surface</b> : zingué	<b>Oberfläche</b> : verzinkt

M x l	art code	EAN	BOX	KG/ BOX
6 x 8	00912,06008 Z	5410439102377	500	1,24
6 x 10	00912,06010 Z	5410439038959	500	0,11
6 x 12	00912,06012 Z	5410439038997	500	0,36
6 x 16	00912,06016 Z	5410439039031	500	0,44
6 x 20	00912,06020 Z	5410439039079	500	2,41
6 x 25	00912,06025 Z	5410439039116	500	0,88
6 x 30	00912,06030 Z	5410439039154	500	0,94
6 x 35	00912,06035 Z	5410439039192	200	2,87
6 x 40	00912,06040 Z	5410439039239	200	0,60
6 x 45	00912,06045 Z	5410439039260	200	1,33
6 x 50	00912,06050 Z	5410439039307	200	0,44
6 x 55	00912,06055 Z	5410439165679	200	1,30
6 x 60	00912,06060 Z	5410439039352	200	1,22
6 x 65	00912,06065 Z	5410439165686	200	0,35
6 x 70	00912,06070 Z	5410439039383	200	0,34
6 x 80	00912,06080 Z	5410439039406	200	0,36
6 x 90	00912,06090 Z	5410439039420	100	0,37
6 x 100	00912,06100 Z	5410439039444	100	0,35
6 x 110	00912,06110 Z	5410439165693	100	6,08
6 x 120	00912,06120 Z	5410439114745	100	0,68
8 x 10	00912,08010 Z	5410439039468	200	0,63
8 x 12	00912,08012 Z	5410439039482	200	1,10
8 x 16	00912,08016 Z	5410439039529	200	2,96
8 x 20	00912,08020 Z	5410439039567	200	0,68
8 x 25	00912,08025 Z	5410439039604	200	2,26
8 x 30	00912,08030 Z	5410439039642	200	1,28
8 x 35	00912,08035 Z	5410439039680	200	2,36
8 x 40	00912,08040 Z	5410439039727	200	5,48
8 x 45	00912,08045 Z	5410439039758	200	2,01
8 x 50	00912,08050 Z	5410439039796	200	0,92
8 x 55	00912,08055 Z	5410439039826	200	1,49
8 x 60	00912,08060 Z	5410439039864	200	1,46
8 x 65	00912,08065 Z	5410439114752	200	0,91
8 x 70	00912,08070 Z	5410439039895	200	0,23
8 x 80	00912,08080 Z	5410439039925	100	0,33
8 x 90	00912,08090 Z	5410439039949	100	0,80
8 x 100	00912,08100 Z	5410439039963	100	0,73
8 x 110	00912,08110 Z	5410439114769	100	1,24
8 x 120	00912,08120 Z	5410439305280	100	1,20
8 x 130	00912,08130 Z	5410439165808	100	2,72
8 x 140	00912,08140 Z	5410439114776	100	4,25
8 x 150	00912,08150 Z	5410439114783	100	1,20
8 x 160	00912,08160 Z	5410439165952	100	4,32

M x l	art code	EAN	BOX	KG/ BOX
10 x 12	00912,10012 Z	5410439114790	200	2,50
10 x 16	00912,10016 Z	5410439039994	200	0,86
10 x 20	00912,10020 Z	5410439040037	200	0,29
10 x 25	00912,10025 Z	5410439040075	200	0,16
10 x 30	00912,10030 Z	5410439040112	200	1,20
10 x 35	00912,10035 Z	5410439040150	100	0,84
10 x 40	00912,10040 Z	5410439040198	100	0,08
10 x 45	00912,10045 Z	5410439040228	100	0,13
10 x 50	00912,10050 Z	5410439040266	100	0,24
10 x 55	00912,10055 Z	5410439040297	100	0,55
10 x 60	00912,10060 Z	5410439040334	100	1,23
10 x 65	00912,10065 Z	5410439040341	100	2,44
10 x 70	00912,10070 Z	5410439040372	100	0,68
10 x 80	00912,10080 Z	5410439040402	100	0,76
10 x 90	00912,10090 Z	5410439040433	100	4,50
10 x 100	00912,10100 Z	5410439040464	100	0,40
10 x 110	00912,10110 Z	5410439040488	50	1,28
10 x 120	00912,10120 Z	5410439040501	50	2,40
10 x 130	00912,10130 Z	5410439165839	50	1,52
10 x 140	00912,10140 Z	5410439165846	50	2,12
10 x 150	00912,10150 Z	5410439165853	50	0,77
10 x 160	00912,10160 Z	5410439165860	50	1,08
12 x 20	00912,12020 Z	5410439040549	100	0,69
12 x 25	00912,12025 Z	5410439040587	100	1,70
12 x 30	00912,12030 Z	5410439040624	100	3,54
12 x 35	00912,12035 Z	5410439040662	100	1,56
12 x 40	00912,12040 Z	5410439040709	100	1,04
12 x 45	00912,12045 Z	5410439040730	100	1,50
12 x 50	00912,12050 Z	5410439040778	100	2,28
12 x 55	00912,12055 Z	5410439040808	100	0,32
12 x 60	00912,12060 Z	5410439040846	100	5,08
12 x 65	00912,12065 Z	5410439040853	50	7,08
12 x 70	00912,12070 Z	5410439040884	50	14,40
12 x 80	00912,12080 Z	5410439040914	50	0,64
12 x 90	00912,12090 Z	5410439040945	50	26,00
12 x 100	00912,12100 Z	5410439040976	50	47,20
12 x 110	00912,12110 Z	5410439041003	50	0,88
12 x 120	00912,12120 Z	5410439041034	50	1,64
12 x 130	00912,12130 Z	5410439114806	50	3,48
12 x 140	00912,12140 Z	5410439140089	50	1,85
12 x 150	00912,12150 Z	5410439166225	50	2,75
12 x 160	00912,12160 Z	5410439176446	50	1,08
14 x 30	00912,14030 Z	5410439041072	100	1,34

B



<b>material</b> : Steel 8.8 <b>type</b> : standard <b>surface</b> : zinc plated	<b>materiaal</b> : Staal 8.8 <b>type</b> : standaard <b>oppervlak</b> : verzinkt	<b>matière</b> : Acier 8.8 <b>type</b> : standard <b>surface</b> : zingué	<b>Werkstoff</b> : Stahl 8.8 <b>Typ</b> : normalmass <b>Oberfläche</b> : verzinkt
---	--	---	---

**B**

M x l	art code	EAN	BOX	KG/ BOX
14 x 35	00912,14035 Z	5410439041102	100	0,49
14 x 40	00912,14040 Z	5410439041133	50	0,65
14 x 45	00912,14045 Z	5410439041164	50	0,81
14 x 50	00912,14050 Z	5410439041195	50	0,17
14 x 55	00912,14055 Z	5410439041225	50	
14 x 60	00912,14060 Z	5410439041256	50	0,60
14 x 65	00912,14065 Z	5410439165921	50	0,55
14 x 70	00912,14070 Z	5410439041287	50	0,16
14 x 80	00912,14080 Z	5410439041317	50	0,47
14 x 90	00912,14090 Z	5410439041348	50	4,28
14 x 100	00912,14100 Z	5410439041379	50	0,87
14 x 110	00912,14110 Z	5410439041393	50	1,84
14 x 120	00912,14120 Z	5410439041416	50	2,83
16 x 30	00912,16030 Z	5410439041454	50	64,80
16 x 35	00912,16035 Z	5410439041492	50	0,56
16 x 40	00912,16040 Z	5410439041539	50	95,16
16 x 45	00912,16045 Z	5410439041560	50	0,96
16 x 50	00912,16050 Z	5410439041607	50	1,00
16 x 55	00912,16055 Z	5410439041638	50	2,40
16 x 60	00912,16060 Z	5410439041676	50	4,28
16 x 65	00912,16065 Z	5410439041690	50	1,36
16 x 70	00912,16070 Z	5410439041737	50	1,45
16 x 75	00912,16075 Z	5410439620321	50	4,04
16 x 80	00912,16080 Z	5410439041775	50	0,12

M x l	art code	EAN	BOX	KG/ BOX
16 x 90	00912,16090 Z	5410439041805	50	0,16
16 x 100	00912,16100 Z	5410439041836	50	5,80
16 x 110	00912,16110 Z	5410439041867	50	0,84
16 x 120	00912,16120 Z	5410439041898	50	0,63
16 x 130	00912,16130 Z	5410439115346	25	0,22
16 x 140	00912,16140 Z	5410439115353	25	0,08
16 x 150	00912,16150 Z	5410439115360	25	0,16
16 x 160	00912,16160 Z	5410439115377	25	0,24
20 x 45	00912,20045 Z	5410439042017	50	0,90
20 x 50	00912,20050 Z	5410439042055	25	1,00
20 x 55	00912,20055 Z	5410439042086	25	1,94
20 x 60	00912,20060 Z	5410439042123	25	0,75
20 x 65	00912,20065 Z	5410439165938	25	1,36
20 x 70	00912,20070 Z	5410439042161	25	2,24
20 x 80	00912,20080 Z	5410439042208	25	2,60
20 x 90	00912,20090 Z	5410439042239	25	0,12
20 x 100	00912,20100 Z	5410439042260	25	0,64
20 x 110	00912,20110 Z	5410439042291	25	0,24
20 x 120	00912,20120 Z	5410439042321	25	0,13
20 x 130	00912,20130 Z	5410439115384	25	2,01
20 x 140	00912,20140 Z	5410439115391	25	2,83
20 x 150	00912,20150 Z	5410439115407	25	0,36
20 x 160	00912,20160 Z	5410439165945	25	3,04

Din 912 (12/1983) \*

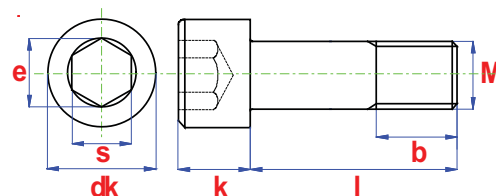
EN 4762 (06/2004) \*\*

CAP HEAD SCREW HEXAGON SOCKET

BINNENZESKANTBOUT MET CIL.KOP

VIS TETE CYLINDRIQUE À SIX PANS CREUX

INNENSECHSKANTSCHRAUBE MIT ZYLINDERKOPF



B



<b>material</b> : Steel 12.9	<b>materiaal</b> : Staal 12.9	<b>matière</b> : Acier 12.9	<b>Werkstoff</b> : Stahl 12.9
<b>type</b> : standard	<b>type</b> : standaard	<b>type</b> : standard	<b>Typ</b> : normalmass
<b>surface</b> : plain	<b>oppervlak</b> : blank	<b>surface</b> : brut	<b>Oberfläche</b> : roh

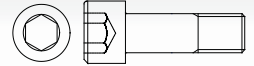
Technical properties / Technische gegevens / Données techniques / Technische Daten

M	b	dk max.	e min.	k max.	s max.
M 4	20	7	3.44	4	3.08
M 5	22	8.5	4.58	5	4.095
M 6	24	10	5.72	6	5.14
M 8	28	13	6.86	8	6.14
M 10	32	16	9.15	10	8.175
M 12	36	18	11.43	12	10.175
M 16	44	24	16	16	14.212
M 20	52	30	19.44	20	17.23
M 24	60	36	21.73	24	19.275

\* Cancelled since 11/1997 \*\* Identical interchangeable  
 \* Vervallen vanaf 11/1997 \*\* Identiek uitwisselbaar  
 \* Retiré à partir de 11/1997 \*\* Identique  
 \* Storniert ab 11/1997 \*\* Identisch austauschbar

M x l	art code	EAN	BOX	KG/ BOX
4 x 6	00912,04006 SS	5410439114943	500	0,20
4 x 8	00912,04008 SS	5410439099349	500	0,20
4 x 10	00912,04010 SS	5410439038164	500	0,56
4 x 12	00912,04012 SS	5410439038201	500	0,81
4 x 16	00912,04016 SS	5410439038249	500	0,08
4 x 20	00912,04020 SS	5410439038287	500	0,12
4 x 25	00912,04025 SS	5410439038324	500	0,13
4 x 30	00912,04030 SS	5410439038362	500	0,16
4 x 35	00912,04035 SS	5410439038409	500	0,12
4 x 40	00912,04040 SS	5410439038447	500	0,36
5 x 8	00912,05008 SS	5410439099424	500	0,78
5 x 10	00912,05010 SS	5410439038515	500	1,26
5 x 12	00912,05012 SS	5410439038553	500	0,25
5 x 16	00912,05016 SS	5410439038591	500	1,96
5 x 20	00912,05020 SS	5410439038638	500	1,24
5 x 25	00912,05025 SS	5410439038676	500	0,08
5 x 30	00912,05030 SS	5410439038713	500	0,12
5 x 35	00912,05035 SS	5410439038751	200	0,12
5 x 40	00912,05040 SS	5410439038799	200	3,88
5 x 45	00912,05045 SS	5410439038829	200	0,28

M x l	art code	EAN	BOX	KG/ BOX
5 x 50	00912,05050 SS	5410439099455	200	0,44
6 x 10	00912,06010 SS	5410439038942	500	0,56
6 x 12	00912,06012 SS	5410439038980	500	0,75
6 x 16	00912,06016 SS	5410439039024	500	0,12
6 x 20	00912,06020 SS	5410439039062	500	0,71
6 x 25	00912,06025 SS	5410439039109	500	1,20
6 x 30	00912,06030 SS	5410439039147	500	1,40
6 x 35	00912,06035 SS	5410439039185	200	1,00
6 x 40	00912,06040 SS	5410439039222	200	0,50
6 x 45	00912,06045 SS	5410439039253	200	0,12
6 x 50	00912,06050 SS	5410439039291	200	0,16
6 x 55	00912,06055 SS	5410439039321	200	0,32
6 x 60	00912,06060 SS	5410439039345	200	0,48
6 x 70	00912,06070 SS	5410439039376	200	0,64
6 x 80	00912,06080 SS	5410439099592	200	0,91
6 x 90	00912,06090 SS	5410439099615	200	0,30
6 x 100	00912,06100 SS	5410439099622	200	0,49
8 x 16	00912,08016 SS	5410439039512	200	1,40
8 x 20	00912,08020 SS	5410439039550	200	0,12



<b>material</b> : Steel 12.9	<b>materiaal</b> : Staal 12.9	<b>matière</b> : Acier 12.9	<b>Werkstoff</b> : Stahl 12.9
<b>type</b> : standard	<b>type</b> : standaard	<b>type</b> : standard	<b>Typ</b> : normalmass
<b>surface</b> : plain	<b>oppervlak</b> : blank	<b>surface</b> : brut	<b>Oberfläche</b> : roh

**B**

M x l	art code	EAN	BOX	KG/ BOX
8 x 25	00912,08025 SS	5410439039598	200	1,66
8 x 30	00912,08030 SS	5410439039635	200	0,62
8 x 35	00912,08035 SS	5410439039673	200	0,86
8 x 40	00912,08040 SS	5410439039710	200	0,16
8 x 45	00912,08045 SS	5410439039741	200	0,20
8 x 50	00912,08050 SS	5410439039789	200	1,22
8 x 55	00912,08055 SS	5410439039819	200	0,96
8 x 60	00912,08060 SS	5410439039857	200	0,20
10 x 16	00912,10016 SS	5410439039987	200	0,92
10 x 20	00912,10020 SS	5410439040020	200	1,12
10 x 25	00912,10025 SS	5410439040068	200	0,24
10 x 30	00912,10030 SS	5410439040105	200	0,15
10 x 35	00912,10035 SS	5410439040143	100	1,29
10 x 40	00912,10040 SS	5410439040181	100	1,72
10 x 45	00912,10045 SS	5410439040211	100	1,72
10 x 50	00912,10050 SS	5410439040259	100	1,80
10 x 55	00912,10055 SS	5410439040280	100	0,16
10 x 60	00912,10060 SS	5410439040327	100	1,66
10 x 70	00912,10070 SS	5410439040365	100	2,52
10 x 80	00912,10080 SS	5410439040396	100	0,64
10 x 90	00912,10090 SS	5410439040426	100	0,56
10 x 100	00912,10100 SS	5410439040457	100	2,44
12 x 20	00912,12020 SS	5410439040532	200	0,87
12 x 25	00912,12025 SS	5410439040570	100	0,08
12 x 30	00912,12030 SS	5410439040617	100	0,08
12 x 35	00912,12035 SS	5410439040655	100	0,12
12 x 40	00912,12040 SS	5410439040693	100	0,46
12 x 45	00912,12045 SS	5410439040723	100	0,16
12 x 50	00912,12050 SS	5410439040761	100	0,88
12 x 55	00912,12055 SS	5410439040792	100	1,20
12 x 60	00912,12060 SS	5410439040839	100	0,36
12 x 70	00912,12070 SS	5410439040877	50	0,68
12 x 80	00912,12080 SS	5410439040907	50	1,59
12 x 90	00912,12090 SS	5410439040938	50	5,40

M x l	art code	EAN	BOX	KG/ BOX
12 x 100	00912,12100 SS	5410439040969	50	2,24
12 x 110	00912,12110 SS	5410439040990	50	3,48
12 x 120	00912,12120 SS	5410439041027	50	3,32
16 x 30	00912,16030 SS	5410439041447	50	3,56
16 x 35	00912,16035 SS	5410439041485	50	0,08
16 x 40	00912,16040 SS	5410439041522	50	0,16
16 x 45	00912,16045 SS	5410439041553	50	0,36
16 x 50	00912,16050 SS	5410439041591	50	0,64
16 x 55	00912,16055 SS	5410439041621	50	1,00
16 x 60	00912,16060 SS	5410439041669	50	1,40
16 x 70	00912,16070 SS	5410439041720	50	0,60
16 x 80	00912,16080 SS	5410439041768	50	1,20
16 x 90	00912,16090 SS	5410439041799	25	1,55
16 x 100	00912,16100 SS	5410439041829	25	3,60
16 x 110	00912,16110 SS	5410439041850	25	0,41
16 x 120	00912,16120 SS	5410439041881	25	0,20
20 x 40	00912,20040 SS	5410439041973	25	3,68
20 x 45	00912,20045 SS	5410439042000	25	1,07
20 x 50	00912,20050 SS	5410439042048	25	6,70
20 x 60	00912,20060 SS	5410439042116	25	0,28
20 x 70	00912,20070 SS	5410439042154	25	1,79
20 x 80	00912,20080 SS	5410439042192	25	0,12
20 x 90	00912,20090 SS	5410439042222	25	0,20
20 x 100	00912,20100 SS	5410439042253	25	2,76
20 x 110	00912,20110 SS	5410439042284	25	0,23
20 x 120	00912,20120 SS	5410439042314	25	0,42
24 x 50	00912,24050 SS	5410439042345	25	1,06
24 x 60	00912,24060 SS	5410439042383	25	0,44
24 x 70	00912,24070 SS	5410439042406	25	0,50
24 x 80	00912,24080 SS	5410439042420	10	1,08
24 x 90	00912,24090 SS	5410439042444	10	5,28
24 x 100	00912,24100 SS	5410439042468	10	0,68
24 x 110	00912,24110 SS	5410439042482	10	0,08
24 x 120	00912,24120 SS	5410439042505	10	1,92

Din 912 (12/1983) \*

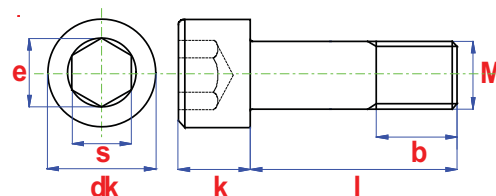
EN 4762 (06/2004) \*\*

CAP HEAD SCREW HEXAGON SOCKET

BINNENZESKANTBOUT MET CIL.KOP

VIS TETE CYLINDRIQUE À SIX PANS CREUX

INNENSECHSKANTSCHRAUBE MIT ZYLINDERKOPF



B



material : Stainless steel A2	materiaal : Inox A2	matière : Inox A2	Werkstoff : Edelstahl A2
type :	type :	type :	Typ :
surface : plain	oppervlak : blank	surface : brut	Oberfläche : roh

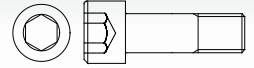
Technical properties / Technische gegevens / Données techniques / Technische Daten

M	b	dk max.	e min.	k max.	s max.
M 3	18	5.5	2.87	3	2.58
M 4	20	7	3.44	4	3.08
M 5	22	8.5	4.58	5	4.095
M 6	24	10	5.72	6	5.14
M 8	28	13	6.86	8	6.14
M 10	32	16	9.15	10	8.175
M 12	36	18	11.43	12	10.175
M 16	44	24	16	16	14.212

\* Cancelled since 11/1997 \*\* Identical interchangeable  
 \* Vervallen vanaf 11/1997 \*\* Identiek uitwisselbaar  
 \* Retiré à partir de 11/1997 \*\* Identique  
 \* Storniert ab 11/1997 \*\* Identisch austauschbar

M x l	art code	EAN	BOX	KG/ BOX
3 x 6	00912,03006 A2	5410439102223	500	0,84
3 x 8	00912,03008 A2	5410439102230	500	0,36
3 x 10	00912,03010 A2	5410439038065	500	0,40
3 x 12	00912,03012 A2	5410439038072	500	0,12
3 x 16	00912,03016 A2	5410439038089	500	0,03
3 x 20	00912,03020 A2	5410439038096	500	0,28
3 x 25	00912,03025 A2	5410439038102	500	0,04
3 x 30	00912,03030 A2	5410439038119	500	0,32
3 x 35	00912,03035 A2	5410439102292	200	0,32
3 x 40	00912,03040 A2	5410439102308	200	0,36
4 x 8	00912,04008 A2	5410439102339	500	0,10
4 x 10	00912,04010 A2	5410439038140	500	0,03
4 x 12	00912,04012 A2	5410439038188	500	0,68
4 x 16	00912,04016 A2	5410439038225	500	0,04
4 x 20	00912,04020 A2	5410439038263	500	0,52
4 x 25	00912,04025 A2	5410439038300	500	0,52
4 x 30	00912,04030 A2	5410439038348	500	0,60
4 x 35	00912,04035 A2	5410439038386	500	0,40
4 x 40	00912,04040 A2	5410439038423	200	0,08
4 x 50	00912,04050 A2	5410439208468	200	0,12

M x l	art code	EAN	BOX	KG/ BOX
5 x 10	00912,05010 A2	5410439038492	500	0,08
5 x 12	00912,05012 A2	5410439038539	200	0,20
5 x 16	00912,05016 A2	5410439038577	200	0,28
5 x 20	00912,05020 A2	5410439038614	200	0,34
5 x 25	00912,05025 A2	5410439038652	200	0,32
5 x 30	00912,05030 A2	5410439038690	200	0,08
5 x 35	00912,05035 A2	5410439038737	200	0,23
5 x 40	00912,05040 A2	5410439038775	200	0,20
5 x 45	00912,05045 A2	5410439102360	200	0,40
5 x 50	00912,05050 A2	5410439038843	200	0,20
5 x 55	00912,05055 A2	5410439173421	200	0,60
5 x 60	00912,05060 A2	5410439114844	200	0,08
6 x 10	00912,06010 A2	5410439038928	200	0,24
6 x 12	00912,06012 A2	5410439038966	200	0,88
6 x 16	00912,06016 A2	5410439039000	200	0,32
6 x 20	00912,06020 A2	5410439039048	200	0,64
6 x 25	00912,06025 A2	5410439039086	200	1,44
6 x 30	00912,06030 A2	5410439039123	200	0,16
6 x 35	00912,06035 A2	5410439039161	200	1,60
6 x 40	00912,06040 A2	5410439039208	200	0,19



<b>material</b> : Stainless steel A2	<b>materiaal</b> : Inox A2	<b>matière</b> : Inox A2	<b>Werkstoff</b> : Edelstahl A2
<b>type</b> :	<b>type</b> :	<b>type</b> :	<b>Typ</b> :
<b>surface</b> : plain	<b>oppervlak</b> : blank	<b>surface</b> : brut	<b>Oberfläche</b> : roh

**B**

M x l	art code	EAN	BOX	KG/ BOX
6 x 45	00912,06045 A2	5410439102384	200	0,08
6 x 50	00912,06050 A2	5410439039277	100	0,21
6 x 55	00912,06055 A2	5410439114868	100	0,21
6 x 60	00912,06060 A2	5410439102391	100	0,16
6 x 70	00912,06070 A2	5410439114875	100	0,20
8 x 12	00912,08012 A2	5410439102407	200	0,24
8 x 16	00912,08016 A2	5410439039499	200	0,34
8 x 20	00912,08020 A2	5410439039536	200	0,04
8 x 25	00912,08025 A2	5410439039574	100	0,28
8 x 30	00912,08030 A2	5410439039611	100	0,64
8 x 35	00912,08035 A2	5410439039659	100	0,35
8 x 40	00912,08040 A2	5410439039697	100	1,13
8 x 45	00912,08045 A2	5410439102414	100	0,32
8 x 50	00912,08050 A2	5410439039765	100	0,36
8 x 55	00912,08055 A2	5410439114899	100	0,03
8 x 60	00912,08060 A2	5410439039833	100	2,40
8 x 70	00912,08070 A2	5410439102421	50	10,00
8 x 80	00912,08080 A2	5410439102438	50	4,04
8 x 90	00912,08090 A2	5410439187336	50	0,65
8 x 100	00912,08100 A2	5410439187343	50	0,62
10 x 16	00912,10016 A2	5410439102445	100	0,20
10 x 20	00912,10020 A2	5410439040006	100	0,39
10 x 25	00912,10025 A2	5410439040044	100	0,52
10 x 30	00912,10030 A2	5410439040082	100	4,48
10 x 35	00912,10035 A2	5410439040129	100	0,41
10 x 40	00912,10040 A2	5410439040167	100	4,48
10 x 45	00912,10045 A2	5410439102452	100	0,21
10 x 50	00912,10050 A2	5410439040235	50	0,37
10 x 55	00912,10055 A2	5410439114905	50	0,52

M x l	art code	EAN	BOX	KG/ BOX
10 x 60	00912,10060 A2	5410439040303	50	9,00
10 x 70	00912,10070 A2	5410439102469	50	0,02
10 x 80	00912,10080 A2	5410439102476	50	0,59
10 x 90	00912,10090 A2	5410439187404	50	0,68
10 x 100	00912,10100 A2	5410439187411	50	0,31
12 x 20	00912,12020 A2	5410439040518	50	0,09
12 x 25	00912,12025 A2	5410439040556	50	0,16
12 x 30	00912,12030 A2	5410439040594	50	0,69
12 x 35	00912,12035 A2	5410439040631	50	0,71
12 x 40	00912,12040 A2	5410439040679	50	0,89
12 x 45	00912,12045 A2	5410439114912	50	0,06
12 x 50	00912,12050 A2	5410439040747	50	0,04
12 x 55	00912,12055 A2	5410439187435	50	0,21
12 x 60	00912,12060 A2	5410439040815	50	0,24
12 x 70	00912,12070 A2	5410439102483	50	0,08
12 x 80	00912,12080 A2	5410439102490	25	0,22
12 x 90	00912,12090 A2	5410439114929	25	0,25
12 x 100	00912,12100 A2	5410439114936	25	0,20
16 x 30	00912,16030 A2	5410439041423	25	0,50
16 x 35	00912,16035 A2	5410439041461	25	0,73
16 x 40	00912,16040 A2	5410439041508	25	0,66
16 x 45	00912,16045 A2	5410439115025	25	0,65
16 x 50	00912,16050 A2	5410439041577	25	0,87
16 x 55	00912,16055 A2	5410439154468	25	0,24
16 x 60	00912,16060 A2	5410439041645	25	0,79
16 x 70	00912,16070 A2	5410439041706	25	1,03
16 x 80	00912,16080 A2	5410439102513	25	0,28
16 x 90	00912,16090 A2	5410439115032	25	0,30
16 x 100	00912,16100 A2	5410439115049	25	0,63

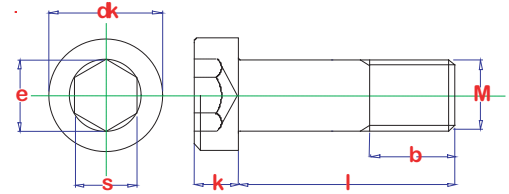


CAP HEAD SCREW HEX.SOCKET REDUCED HEAD HEIGHT

BINNENZESKANTBOUT MET LAGE CIL.KOP

VIS CYLINDRIQUE À 6-PANS CREUX TÊTE BASSE

INNENSECHSKANTSCHRAUBE MIT NIEDRIGEN KOPF



B



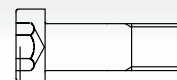
<b>material</b> : Steel 8.8	<b>materiaal</b> : Staal 8.8	<b>matière</b> : Acier 8.8	<b>Werkstoff</b> : Stahl 8.8
<b>type</b> : standard	<b>type</b> : standaard	<b>type</b> : standard	<b>Typ</b> : normalmass
<b>surface</b> : plain	<b>oppervlak</b> : blank	<b>surface</b> : brut	<b>Oberfläche</b> : roh

Technical properties / Technische gegevens / Données techniques / Technische Daten

M	b1 <120	b2 <200	b3 >200	dk max.	e min.	k max.	s max.
M 5	16			8.5	3.44	3.5	3.1
M 6	18			10	4.58	4	4.12
M 8	22	28		13	5.72	5	5.14
M 10	26	32		16	8.01	6	7.175
M 12	30	36		18	9.15	7	8.175
M 16	38	44	57	24	13.72	9	12.212

M x l	art code	EAN	BOX	KG/ BOX
5 x 8	07984,05008 S	5410439083188	500	0,07
5 x 10	07984,05010 S	5410439083195	500	0,07
5 x 12	07984,05012 S	5410439083201	500	0,07
5 x 16	07984,05016 S	5410439083218	500	0,07
5 x 20	07984,05020 S	5410439083225	500	0,07
5 x 25	07984,05025 S	5410439083232	500	0,10
5 x 30	07984,05030 S	5410439132879	500	0,10
5 x 35	07984,05035 S	5410439083249	200	0,07
5 x 40	07984,05040 S	5410439083256	200	0,10
5 x 45	07984,05045 S	5410439083263	200	0,10
5 x 50	07984,05050 S	5410439083270	200	0,10
6 x 10	07984,06010 S	5410439083294	500	0,10
6 x 12	07984,06012 S	5410439083300	500	0,10
6 x 16	07984,06016 S	5410439083317	500	0,25
6 x 20	07984,06020 S	5410439083324	500	0,72
6 x 25	07984,06025 S	5410439083331	500	0,10
6 x 30	07984,06030 S	5410439083348	500	0,07
6 x 35	07984,06035 S	5410439083355	200	0,64
6 x 40	07984,06040 S	5410439083362	200	0,07
6 x 45	07984,06045 S	5410439083379	200	0,10
6 x 50	07984,06050 S	5410439083386	200	0,10
6 x 55	07984,06055 S	5410439188739	200	0,07

M x l	art code	EAN	BOX	KG/ BOX
6 x 60	07984,06060 S	5410439083393	200	0,10
8 x 12	07984,08012 S	5410439134460	200	0,10
8 x 16	07984,08016 S	5410439083409	200	0,07
8 x 20	07984,08020 S	5410439083416	200	0,07
8 x 25	07984,08025 S	5410439083423	200	0,10
8 x 30	07984,08030 S	5410439083430	200	0,10
8 x 35	07984,08035 S	5410439083447	200	0,07
8 x 40	07984,08040 S	5410439083454	200	0,50
8 x 45	07984,08045 S	5410439083461	200	0,10
8 x 50	07984,08050 S	5410439083478	200	0,10
8 x 55	07984,08055 S	5410439083485	200	0,45
8 x 60	07984,08060 S	5410439083492	200	0,10
10 x 16	07984,10016 S	5410439083508	200	0,10
10 x 20	07984,10020 S	5410439083515	200	0,10
10 x 25	07984,10025 S	5410439083522	200	0,10
10 x 30	07984,10030 S	5410439083539	200	0,10
10 x 35	07984,10035 S	5410439083546	100	0,10
10 x 40	07984,10040 S	5410439083553	100	0,92
10 x 45	07984,10045 S	5410439083560	100	0,10
10 x 50	07984,10050 S	5410439083577	100	0,10
10 x 60	07984,10060 S	5410439083584	100	0,10
10 x 70	07984,10070 S	5410439135306	100	0,10



<b>material</b> : Steel 8.8 <b>type</b> : standard <b>surface</b> : plain	<b>materiaal</b> : Staal 8.8 <b>type</b> : standaard <b>oppervlak</b> : blank	<b>matière</b> : Acier 8.8 <b>type</b> : standard <b>surface</b> : brut	<b>Werkstoff</b> : Stahl 8.8 <b>Typ</b> : normalmass <b>Oberfläche</b> : roh
---	---	---	--

M x l	art code	EAN	BOX	KG/ BOX
12 x 20	07984,12020 S	5410439083591	100	0,10
12 x 25	07984,12025 S	5410439083607	100	0,10
12 x 30	07984,12030 S	5410439083614	100	0,10
12 x 35	07984,12035 S	5410439083621	100	0,10
12 x 40	07984,12040 S	5410439083638	100	0,38
12 x 45	07984,12045 S	5410439139175	100	0,07
12 x 50	07984,12050 S	5410439083645	100	0,07
12 x 55	07984,12055 S	5410439188746	100	0,11
12 x 60	07984,12060 S	5410439139182	100	0,10
12 x 70	07984,12070 S	5410439134842	50	0,10

M x l	art code	EAN	BOX	KG/ BOX
12 x 80	07984,12080 S	5410439139199	50	0,10
16 x 25	07984,16025 S	5410439132886	50	0,07
16 x 30	07984,16030 S	5410439132893	50	0,10
16 x 35	07984,16035 S	5410439132909	50	0,10
16 x 40	07984,16040 S	5410439132916	50	0,10
16 x 45	07984,16045 S	5410439132923	50	0,10
16 x 50	07984,16050 S	5410439132930	50	0,10
16 x 60	07984,16060 S	5410439132947	50	0,07
16 x 70	07984,16070 S	5410439139205	50	0,11
16 x 80	07984,16080 S	5410439132954	50	0,10

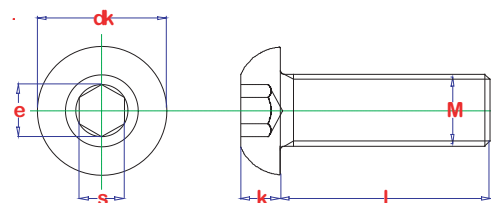
B

HEXAGON SOCKET SCREW WITH BUTTON HEAD

BINNENZESKANTBOUT MET BOLLE KOP

VIS TETE BOMBEE AVEC 6 PANS CREUX

RUNDKOPFSCHRAUBE MIT INNENSECHSKANT



B



<b>material</b> : Steel 10.9	<b>materiaal</b> : Staal 10.9	<b>matière</b> : Acier 10.9	<b>Werkstoff</b> : Stahl 10.9
<b>type</b> : standard	<b>type</b> : standaard	<b>type</b> : standard	<b>Typ</b> : normalmass
<b>surface</b> : plain	<b>oppervlak</b> : blank	<b>surface</b> : brut	<b>Oberfläche</b> : roh

Technical properties / Technische gegevens / Données techniques / Technische Daten

M	dk	e	k	s
M 6	10,5	4,58	3,3	4,095
M 8	14	5,72	4,4	5,095
M 10	17,5	6,86	5,5	6,095

M x l	art code	EAN	BOX	KG/ BOX
6 x 8	00ULS,06008 S-	5410439094085	500	6,25
6 x 10	00ULS,06010 S-	5410439304757	500	7,50
6 x 12	00ULS,06012 S-	5410439304726	500	8,00
6 x 16	00ULS,06016 S-	5410439304719	500	9,75
6 x 20	00ULS,06020 S-	5410439304900	500	12,25
6 x 25	00ULS,06025 S-	5410439094092	500	13,50
6 x 30	00ULS,06030 S-	5410439304917	500	15,75
6 x 35	00ULS,06035 S-	5410439094108	200	2,84
6 x 40	00ULS,06040 S-	5410439094115	200	3,20
6 x 45	00ULS,06045 S-	5410439094122	200	3,56
6 x 50	00ULS,06050 S-	5410439094139	200	3,88
6 x 60	00ULS,06060 S-	5410439094146	200	4,56
8 x 10	00ULS,08010 S-	5410439094153	200	1,76
8 x 12	00ULS,08012 S-	5410439094160	200	2,08
8 x 16	00ULS,08016 S-	5410439094177	200	2,68
8 x 20	00ULS,08020 S-	5410439094184	200	3,28

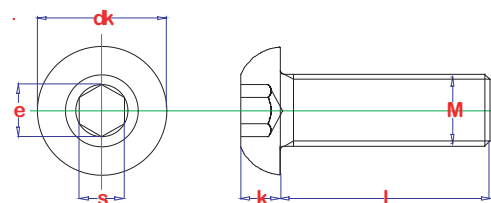
M x l	art code	EAN	BOX	KG/ BOX
8 x 25	00ULS,08025 S-	5410439094191	200	4,04
8 x 30	00ULS,08030 S-	5410439094252	200	4,80
8 x 35	00ULS,08035 S-	5410439094269	200	5,56
8 x 40	00ULS,08040 S-	5410439094276	200	6,32
8 x 45	00ULS,08045 S-	5410439094283	200	7,16
8 x 50	00ULS,08050 S-	5410439094290	200	7,84
8 x 60	00ULS,08060 S-	5410439094306	200	9,36
10 x 16	00ULS,10016 S-	5410439094320	200	5,64
10 x 20	00ULS,10020 S-	5410439094337	200	6,44
10 x 25	00ULS,10025 S-	5410439094344	200	7,40
10 x 30	00ULS,10030 S-	5410439094351	200	8,36
10 x 35	00ULS,10035 S-	5410439094368	100	2,33
10 x 40	00ULS,10040 S-	5410439094375	100	2,58
10 x 50	00ULS,10050 S-	5410439094399	100	3,06
10 x 60	00ULS,10060 S-	5410439094405	100	3,54

HEXAGON SOCKET SCREW WITH BUTTON HEAD

BINNENZESKANTBOUT MET BOLLE KOP

VIS TETE BOMBEE AVEC 6 PANS CREUX

RUNDKOPFSCHRAUBE MIT INNENSECHSKANT



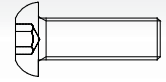
<b>material</b> : Steel 10.9	<b>materiaal</b> : Staal 10.9	<b>matière</b> : Acier 10.9	<b>Werkstoff</b> : Stahl 10.9
<b>type</b> : standard	<b>type</b> : standaard	<b>type</b> : standard	<b>Typ</b> : normalmass
<b>surface</b> : zinc plated	<b>oppervlak</b> : verzinkt	<b>surface</b> : zingù	<b>Oberfläche</b> : verzinkt

Technical properties / Technische gegevens / Données techniques / Technische Daten

M	dk	e	k	s
M 3	5,7	2,3	1,65	2,045
M 4	7,6	2,87	2,2	2,56
M 5	9,5	3,44	2,75	3,08
M 6	10,5	4,58	3,3	4,095
M 8	14	5,72	4,4	5,095
M 10	17,5	6,86	5,5	6,095
M 12	21	9,15	6,6	8,115

M x l	art code	EAN	BOX	KG/ BOX
3 x 6	00ULS,03006 Z-	5410439013918	500	1,25
3 x 8	00ULS,03008 Z-	5410439427326	200	0,24
4 x 6	00ULS,04006 Z-	5410439375962	500	2,50
4 x 8	00ULS,04008 Z-	5410439208789	500	2,75
4 x 10	00ULS,04010 Z-	5410439375979	200	0,52
4 x 12	00ULS,04012 Z-	5410439188562	200	0,60
4 x 16	00ULS,04016 Z-	5410439107099	200	0,72
4 x 20	00ULS,04020 Z-	5410439188579	500	5,00
4 x 25	00ULS,04025 Z-	5410439427340	200	1,08
5 x 6	00ULS,05006 Z-	5410439220040	200	0,68
5 x 8	00ULS,05008 Z-	5410439375986	200	0,76
5 x 10	00ULS,05010 Z-	5410439304887	200	0,88
5 x 12	00ULS,05012 Z-	5410439188586	200	1,00
5 x 16	00ULS,05016 Z-	5410439304832	200	1,20
5 x 20	00ULS,05020 Z-	5410439228206	200	1,44
5 x 25	00ULS,05025 Z-	5410439427371	500	9,75
5 x 30	00ULS,05030 Z-	5410439427388	200	1,80
6 x 8	00ULS,06008 Z-	5410439427425	200	1,16
6 x 10	00ULS,06010 Z-	5410439235822	200	1,28
6 x 12	00ULS,06012 Z-	5410439181501	200	1,40
6 x 16	00ULS,06016 Z-	5410439104890	200	1,68

M x l	art code	EAN	BOX	KG/ BOX
6 x 20	00ULS,06020 Z-	5410439188593	200	1,96
6 x 25	00ULS,06025 Z-	5410439202367	200	2,28
6 x 30	00ULS,06030 Z-	5410439101622	200	2,60
6 x 35	00ULS,06035 Z-	5410439427432	200	3,00
6 x 40	00ULS,06040 Z-	5410439201810	200	3,36
6 x 45	00ULS,06045 Z-	5410439427449	200	3,72
6 x 50	00ULS,06050 Z-	5410439375993	200	4,08
6 x 60	00ULS,06060 Z-	5410439427463	200	4,76
8 x 10	00ULS,08010 Z-	5410439427487	200	2,48
8 x 12	00ULS,08012 Z-	5410439427494	200	2,80
8 x 16	00ULS,08016 Z-	5410439101691	200	3,36
8 x 20	00ULS,08020 Z-	5410439305969	200	3,84
8 x 25	00ULS,08025 Z-	5410439378635	200	4,52
8 x 30	00ULS,08030 Z-	5410439188609	200	5,08
8 x 35	00ULS,08035 Z-	5410439427500	200	5,72
8 x 40	00ULS,08040 Z-	5410439427517	200	6,40
8 x 45	00ULS,08045 Z-	5410439427524	200	7,40
8 x 50	00ULS,08050 Z-	5410439427531	200	7,56
10 x 16	00ULS,10016 Z-	5410439427579	200	5,68
10 x 20	00ULS,10020 Z-	5410439427807	200	6,48
10 x 25	00ULS,10025 Z-	5410439427586	200	7,44



<b>material</b> : Steel 10.9 <b>type</b> : standard <b>surface</b> : zinc plated	<b>materiaal</b> : Staal 10.9 <b>type</b> : standaard <b>oppervlak</b> : verzinkt	<b>matière</b> : Acier 10.9 <b>type</b> : standard <b>surface</b> : zinguè	<b>Werkstoff</b> : Stahl 10.9 <b>Typ</b> : normalmass <b>Oberfläche</b> : verzinkt
--	---	--	--

M x l	art code	EAN	BOX	KG/ BOX
10 x 30	00ULS,10030 Z-	5410439427593	200	8,20
10 x 35	00ULS,10035 Z-	5410439204651	100	2,38
10 x 40	00ULS,10040 Z-	5410439429153	100	2,60
10 x 45	00ULS,10045 Z-	5410439431446	100	2,82
10 x 50	00ULS,10050 Z-	5410439431453	100	3,06
12 x 20	00ULS,12020 Z-	5410439430982	100	2,44

M x l	art code	EAN	BOX	KG/ BOX
12 x 25	00ULS,12025 Z-	5410439427623	100	2,80
12 x 30	00ULS,12030 Z-	5410439427630	100	3,36
12 x 35	00ULS,12035 Z-	5410439427647	100	3,50
12 x 40	00ULS,12040 Z-	5410439427654	100	4,01
12 x 45	00ULS,12045 Z-	5410439427661	100	4,20
12 x 50	00ULS,12050 Z-	5410439427678	100	4,55

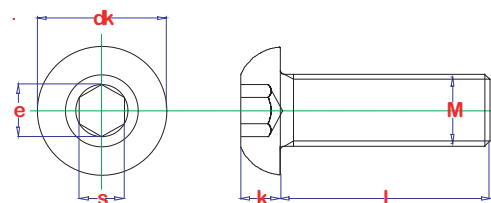
**B**

HEXAGON SOCKET SCREW WITH BUTTON HEAD

BINNENZESKANTBOUT MET BOLLE KOP

VIS TETE BOMBEE AVEC 6 PANS CREUX

RUNDKOPFSCHRAUBE MIT INNENSECHSKANT



<b>material</b> : Stainless steel A2	<b>materiaal</b> : Inox A2	<b>matière</b> : Inox A2	<b>Werkstoff</b> : Edelstahl A2
<b>type</b> :	<b>type</b> :	<b>type</b> :	<b>Typ</b> :
<b>surface</b> : plain	<b>oppervlak</b> : blank	<b>surface</b> : brut	<b>Oberfläche</b> : roh

Technical properties / Technische gegevens / Données techniques / Technische Daten

M	dk	e	k	s
M 5	9,5	3,44	2,75	3,08
M 6	10,5	4,58	3,3	4,095
M 8	14	5,72	4,4	5,095
M 10	17,5	6,86	5,5	6,095

M x l	art code	EAN	BOX	KG/ BOX
5 x 10	00ULS,05010 A2	5410439134828	200	0,88
5 x 12	00ULS,05012 A2	5410439135641	200	0,96
5 x 16	00ULS,05016 A2	5410439135221	200	1,16
5 x 20	00ULS,05020 A2	5410439127295	200	1,36
5 x 25	00ULS,05025 A2	5410439141963	200	1,56
6 x 10	00ULS,06010 A2	5410439134088	200	1,28
6 x 12	00ULS,06012 A2	5410439133913	200	1,40
6 x 16	00ULS,06016 A2	5410439134767	200	1,68
6 x 20	00ULS,06020 A2	5410439133920	200	2,00
6 x 25	00ULS,06025 A2	5410439134798	200	2,32
6 x 30	00ULS,06030 A2	5410439134804	200	2,68

M x l	art code	EAN	BOX	KG/ BOX
6 x 35	00ULS,06035 A2	5410439140874	200	3,04
6 x 40	00ULS,06040 A2	5410439140584	200	3,40
8 x 16	00ULS,08016 A2	5410439134774	200	3,32
8 x 20	00ULS,08020 A2	5410439134781	200	3,76
8 x 25	00ULS,08025 A2	5410439133937	200	4,48
8 x 30	00ULS,08030 A2	5410439134811	200	4,80
8 x 35	00ULS,08035 A2	5410439134675	200	5,76
8 x 40	00ULS,08040 A2	5410439134682	200	6,28
10 x 20	00ULS,10020 A2	5410439140836	100	1,68
10 x 25	00ULS,10025 A2	5410439133944	100	1,84
10 x 30	00ULS,10030 A2	5410439139809	100	2,16

Din 7991 (01/1986) \*

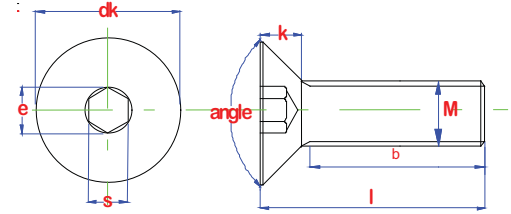
EN 10642 (06/2004)\*\*

HEX. SOCKET CAP SCREW COUNTERSUNK HEAD

BINNENZESKANTBOUT MET VERZONKEN KOP

VIS A 6PC TÊTE FRAISÉE

INNENSECHTSKANTSCHRAUBE SENKKOPF



B



<b>material</b> : Steel 10.9	<b>materiaal</b> : Staal 10.9	<b>matière</b> : Acier 10.9	<b>Werkstoff</b> : Stahl 10.9
<b>type</b> : full thread	<b>type</b> : voldraad	<b>type</b> : Des filets	<b>Typ</b> : Vollgewinde
<b>surface</b> : plain	<b>oppervlak</b> : blank	<b>surface</b> : brut	<b>Oberfläche</b> : rohe

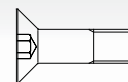
Technical properties / Technische gegevens / Données techniques / Technische Daten

M	angle min.	b1<130	b2>130	b3>200	dk max.	e min.	k max.	s max.
M 3	90	12			6	2.3	1.7	2.1
M 4		14			8	2.87	2.3	2.6
M 5		16			10	3.44	2.8	3.1
M 6		18	24		12	4.58	3.3	4.12
M 8		22	28		16	5.72	4.4	5.14
M 10		26	32	45	20	6.86	5.5	6.14
M 12		30	36	49	24	9.15	6.5	8.175
M 16		38	44	57	30	11.43	7.5	10.175
M 20		46	52	65	36	13.72	8.5	12.212

\* Cancelled since 11/1997 \* Nearly identical  
 \* vervallen vanaf 11/1997 \* Verregaand uitwisselbaar  
 \* Retiré à partir de 11/1997 \*\* presque identique  
 \* Storniert ab 11/1997 \*\* Weitgehend austauschbar

M x l	art code	EAN	BOX	KG/ BOX
3 x 6	07991,03006 S-	5410439307505	500	1,00
3 x 8	07991,03008 S-	5410439084666	500	1,25
3 x 10	07991,03010 S-	5410439084697	500	1,50
3 x 12	07991,03012 S-	5410439084727	500	1,75
3 x 16	07991,03016 S-	5410439084758	500	2,25
3 x 20	07991,03020 S-	5410439084789	500	2,50
3 x 25	07991,03025 S-	5410439152136	500	3,50
4 x 6	07991,04006 S-	5410439306898	500	1,75
4 x 8	07991,04008 S-	5410439084826	500	2,50
4 x 10	07991,04010 S-	5410439084857	500	2,75
4 x 12	07991,04012 S-	5410439084888	500	3,25
4 x 16	07991,04016 S-	5410439084925	500	4,00
4 x 20	07991,04020 S-	5410439084963	500	4,50
4 x 25	07991,04025 S-	5410439084994	500	5,50
5 x 8	07991,05008 S-	5410439303545	500	4,00
5 x 10	07991,05010 S-	5410439085076	500	4,50
5 x 12	07991,05012 S-	5410439085106	500	5,25
5 x 16	07991,05016 S-	5410439085144	500	6,50
5 x 20	07991,05020 S-	5410439085182	500	7,25
5 x 25	07991,05025 S-	5410439085212	500	9,25

M x l	art code	EAN	BOX	KG/ BOX
5 x 30	07991,05030 S-	5410439085243	500	10,75
6 x 8	07991,06008 S-	5410439085366	500	6,00
6 x 10	07991,06010 S-	5410439085397	500	6,75
6 x 12	07991,06012 S-	5410439085427	500	7,75
6 x 16	07991,06016 S-	5410439085465	500	9,50
6 x 20	07991,06020 S-	5410439085502	500	11,50
6 x 25	07991,06025 S-	5410439085533	500	13,75
6 x 30	07991,06030 S-	5410439085564	500	16,00
6 x 35	07991,06035 S-	5410439085595	200	2,88
8 x 12	07991,08012 S-	5410439107150	200	2,44
8 x 16	07991,08016 S-	5410439085762	200	2,96
8 x 20	07991,08020 S-	5410439085809	200	3,64
8 x 25	07991,08025 S-	5410439085830	200	4,00
8 x 30	07991,08030 S-	5410439085861	200	5,00
8 x 35	07991,08035 S-	5410439085892	200	5,32
8 x 40	07991,08040 S-	5410439085922	200	5,84
8 x 45	07991,08045 S-	5410439085953	200	6,76
10 x 16	07991,10016 S-	5410439086035	200	4,84
10 x 20	07991,10020 S-	5410439086066	200	5,64



<b>material</b> : Steel 10.9 <b>type</b> : full thread <b>surface</b> : plain	<b>materiaal</b> : Staal 10.9 <b>type</b> : voldraad <b>oppervlak</b> : blank	<b>matière</b> : Acier 10.9 <b>type</b> : Des filets <b>surface</b> : brut	<b>Werkstoff</b> : Stahl 10.9 <b>Typ</b> : Vollgewinde <b>Oberfläche</b> : rohe
---	---	--	---

M x l	art code	EAN	BOX	KG/ BOX
10 x 25	07991,10025 S-	5410439086097	200	6,64
10 x 30	07991,10030 S-	5410439086127	200	8,04
10 x 35	07991,10035 S-	5410439086158	100	2,16
10 x 40	07991,10040 S-	5410439086189	100	2,49
10 x 45	07991,10045 S-	5410439086219	100	2,71
10 x 50	07991,10050 S-	5410439086240	100	3,06
12 x 20	07991,12020 S-	5410439086332	100	2,12
12 x 25	07991,12025 S-	5410439086363	100	2,54
12 x 30	07991,12030 S-	5410439086394	100	3,10
12 x 35	07991,12035 S-	5410439086424	100	3,28
12 x 40	07991,12040 S-	5410439086455	100	3,59
12 x 45	07991,12045 S-	5410439086486	100	3,94
12 x 50	07991,12050 S-	5410439086516	100	4,44
12 x 55	07991,12055 S-	5410439086530	100	4,85
12 x 60	07991,12060 S-	5410439086561	100	5,42
16 x 25	07991,16025 S-	5410439152532	50	1,13

M x l	art code	EAN	BOX	KG/ BOX
16 x 30	07991,16030 S-	5410439086684	50	1,32
16 x 35	07991,16035 S-	5410439086714	50	1,46
16 x 40	07991,16040 S-	5410439086745	50	1,81
16 x 45	07991,16045 S-	5410439086776	50	1,80
16 x 50	07991,16050 S-	5410439086806	50	2,06
16 x 55	07991,16055 S-	5410439086820	50	2,13
16 x 60	07991,16060 S-	5410439086851	50	2,33
16 x 70	07991,16070 S-	5410439133128	50	2,80
20 x 40	07991,20040 S-	5410439086899	50	2,55
20 x 45	07991,20045 S-	5410439086912	50	2,81
20 x 50	07991,20050 S-	5410439086936	50	3,00
20 x 55	07991,20055 S-	5410439086950	50	3,33
20 x 60	07991,20060 S-	5410439086974	50	3,83
20 x 70	07991,20070 S-	5410439086998	25	1,04
20 x 80	07991,20080 S-	5410439134033	50	5,00
20 x 90	07991,20090 S-	5410439188838	25	1,37



Din 7991 (01/1986) \*

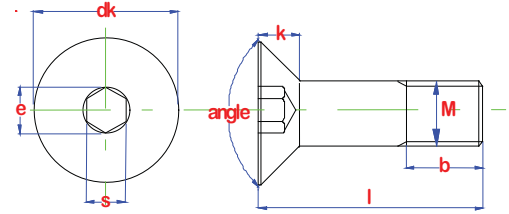
EN 10642 (06/2004)\*\*

HEX. SOCKET CAP SCREW COUNTERSUNK HEAD

BINNENZESKANTBOUT MET VERZONKEN KOP

VIS A 6PC TÊTE FRAISÉE

INNENSECHTSKANTSCHRAUBE SENKKOPF



B



<b>material</b> : Steel 10.9	<b>materiaal</b> : Staal 10.9	<b>matière</b> : Acier 10.9	<b>Werkstoff</b> : Stahl 10.9
<b>type</b> : partial thread	<b>type</b> : deeldraad	<b>type</b> : filetage partiel	<b>Typ</b> : Teilgewinde
<b>surface</b> : plain	<b>oppervlak</b> : blank	<b>surface</b> : brut	<b>Oberfläche</b> : roh

Technical properties / Technische gegevens / Données techniques / Technische Daten

M	angle min.	b1<130	b2>130	b3>200	dk max.	e min.	k max.	s max.
M 3	90	12			6	2.3	1.7	2.1
M 4		14			8	2.87	2.3	2.6
M 5		16			10	3.44	2.8	3.1
M 6		18	24		12	4.58	3.3	4.12
M 8		22	28		16	5.72	4.4	5.14
M 10		26	32	45	20	6.86	5.5	6.14
M 12		30	36	49	24	9.15	6.5	8.175
M 16		38	44	57	30	11.43	7.5	10.175
M 20		46	52	65	36	13.72	8.5	12.212

\* Cancelled since 11/1997 \* Nearly identical  
 \* vervallen vanaf 11/1997 \* Verregaand uitwisselbaar  
 \* Retiré à partir de 11/1997 \*\* presque identique  
 \* Storniert ab 11/1997 \*\* Weitgehend austauschbar

M x l	art code	EAN	BOX	KG/ BOX
3 x 30	07991,03030 S-	5410439152143	500	4,00
3 x 35	07991,03035 S-	5410439152150	500	4,50
4 x 30	07991,04030 S-	5410439085021	500	7,00
4 x 35	07991,04035 S-	5410439152204	500	8,50
4 x 40	07991,04040 S-	5410439152211	500	8,25
5 x 35	07991,05035 S-	5410439085274	200	2,16
5 x 40	07991,05040 S-	5410439085304	200	2,48
5 x 50	07991,05050 S-	5410439085335	200	2,76
6 x 40	07991,06040 S-	5410439085625	200	3,52
6 x 45	07991,06045 S-	5410439085656	200	3,96
6 x 50	07991,06050 S-	5410439085687	200	3,92
6 x 60	07991,06060 S-	5410439132978	200	4,56
6 x 70	07991,06070 S-	5410439134392	200	6,16
6 x 80	07991,06080 S-	5410439134408	200	7,04
8 x 50	07991,08050 S-	5410439085984	200	7,24
8 x 60	07991,08060 S-	5410439132985	200	8,48
8 x 70	07991,08070 S-	5410439132992	200	11,96

M x l	art code	EAN	BOX	KG/ BOX
8 x 80	07991,08080 S-	5410439133005	200	13,96
8 x 90	07991,08090 S-	5410439133012	100	3,99
8 x 100	07991,08100 S-	5410439133029	100	4,49
10 x 60	07991,10060 S-	5410439086295	100	3,57
10 x 70	07991,10070 S-	5410439133036	100	4,12
10 x 80	07991,10080 S-	5410439133043	100	4,66
10 x 90	07991,10090 S-	5410439152471	100	5,20
10 x 100	07991,10100 S-	5410439152488	50	1,44
12 x 70	07991,12070 S-	5410439123341	50	1,52
12 x 80	07991,12080 S-	5410439133050	50	1,79
12 x 90	07991,12090 S-	5410439133852	50	2,01
12 x 100	07991,12100 S-	5410439134743	50	2,23
16 x 80	07991,16080 S-	5410439133135	50	3,19
16 x 90	07991,16090 S-	5410439134118	50	3,58
16 x 100	07991,16100 S-	5410439134125	50	3,92
20 x 100	07991,20100 S-	5410439134644	25	1,58

Din 7991 (01/1986) \*

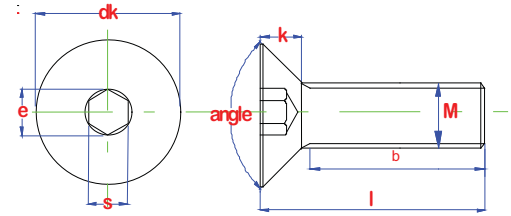
EN 10642 (06/2004)\*\*

HEX. SOCKET CAP SCREW COUNTERSUNK HEAD

BINNENZESKANTBOUT MET VERZONKEN KOP

VIS A 6PC TÊTE FRAISÉE

INNENSECHTSKANTSCHRAUBE SENKKOPF



<b>material</b> : Steel 10.9	<b>materiaal</b> : Staal 10.9	<b>matière</b> : Acier 10.9	<b>Werkstoff</b> : Stahl 10.9
<b>type</b> : standard	<b>type</b> : standaard	<b>type</b> : standard	<b>Typ</b> : normalmass
<b>surface</b> : zinc plated	<b>oppervlak</b> : verzinkt	<b>surface</b> : zingué	<b>Oberfläche</b> : verzinkt

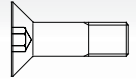
Technical properties / Technische gegevens / Données techniques / Technische Daten

M	angle min.	b1<130	b2>130	b3>200	dk max.	e min.	k max.	s max.
M 3	90	12			6	2.3	1.7	2.1
M 4		14			8	2.87	2.3	2.6
M 5		16			10	3.44	2.8	3.1
M 6		18	24		12	4.58	3.3	4.12
M 8		22	28		16	5.72	4.4	5.14
M 10		26	32	45	20	6.86	5.5	6.14
M 12		30	36	49	24	9.15	6.5	8.175
M 16		38	44	57	30	11.43	7.5	10.175
M 20		46	52	65	36	13.72	8.5	12.212

\* Cancelled since 11/1997 \* Nearly identical  
 \* vervallen vanaf 11/1997 \* Verregaand uitwisselbaar  
 \* Retiré à partir de 11/1997 \*\* presque identique  
 \* Storniert ab 11/1997 \*\* Weitgehend austauschbar

M x l	art code	EAN	BOX	KG/ BOX
3 x 6	07991,03006 Z-	5410439177634	500	1,00
3 x 8	07991,03008 Z-	5410439084673	500	1,25
3 x 10	07991,03010 Z-	5410439084703	500	1,50
3 x 12	07991,03012 Z-	5410439084734	500	1,75
3 x 16	07991,03016 Z-	5410439084765	500	2,25
3 x 20	07991,03020 Z-	5410439084796	500	2,75
3 x 25	07991,03025 Z-	5410439307642	500	3,25
4 x 6	07991,04006 Z-	5410439084819	500	1,75
4 x 8	07991,04008 Z-	5410439084833	500	2,25
4 x 10	07991,04010 Z-	5410439084864	500	2,75
4 x 12	07991,04012 Z-	5410439084895	500	3,25
4 x 16	07991,04016 Z-	5410439084932	500	4,25
4 x 20	07991,04020 Z-	5410439084970	500	4,75
4 x 25	07991,04025 Z-	5410439085007	500	5,50
5 x 8	07991,05008 Z-	5410439177641	500	4,00
5 x 10	07991,05010 Z-	5410439085083	500	4,50
5 x 12	07991,05012 Z-	5410439085113	500	5,25
5 x 16	07991,05016 Z-	5410439085151	500	7,00
5 x 20	07991,05020 Z-	5410439085199	500	8,00
5 x 25	07991,05025 Z-	5410439085229	500	9,50

M x l	art code	EAN	BOX	KG/ BOX
5 x 30	07991,05030 Z-	5410439085250	500	10,75
6 x 8	07991,06008 Z-	5410439085373	500	6,00
6 x 10	07991,06010 Z-	5410439085403	500	7,00
6 x 12	07991,06012 Z-	5410439085434	500	7,75
6 x 16	07991,06016 Z-	5410439085472	500	9,50
6 x 20	07991,06020 Z-	5410439085519	500	11,25
6 x 25	07991,06025 Z-	5410439085540	500	13,50
6 x 30	07991,06030 Z-	5410439085571	500	16,00
6 x 35	07991,06035 Z-	5410439085601	200	2,92
8 x 12	07991,08012 Z-	5410439085748	200	2,48
8 x 16	07991,08016 Z-	5410439085779	200	3,00
8 x 20	07991,08020 Z-	5410439085816	200	3,76
8 x 25	07991,08025 Z-	5410439085847	200	4,08
8 x 30	07991,08030 Z-	5410439085878	200	4,96
8 x 35	07991,08035 Z-	5410439085908	200	5,60
8 x 40	07991,08040 Z-	5410439085939	200	6,08
8 x 45	07991,08045 Z-	5410439085960	200	6,68
10 x 16	07991,10016 Z-	5410439086042	200	5,28
10 x 20	07991,10020 Z-	5410439086073	200	6,36



<b>material</b> : Steel 10.9 <b>type</b> : standard <b>surface</b> : zinc plated	<b>materiaal</b> : Staal 10.9 <b>type</b> : standaard <b>oppervlak</b> : verzinkt	<b>matière</b> : Acier 10.9 <b>type</b> : standard <b>surface</b> : zingué	<b>Werkstoff</b> : Stahl 10.9 <b>Typ</b> : normalmass <b>Oberfläche</b> : verzinkt
--	---	--	--

M x l	art code	EAN	BOX	KG/ BOX
10 x 25	07991,10025 Z-	5410439086103	200	6,88
10 x 30	07991,10030 Z-	5410439086134	200	7,88
10 x 35	07991,10035 Z-	5410439086165	200	8,88
10 x 40	07991,10040 Z-	5410439086196	200	9,76
10 x 45	07991,10045 Z-	5410439086226	100	2,75
10 x 50	07991,10050 Z-	5410439086257	100	3,18
12 x 20	07991,12020 Z-	5410439086349	100	2,23
12 x 25	07991,12025 Z-	5410439086370	100	2,57
12 x 30	07991,12030 Z-	5410439086400	100	3,12
12 x 35	07991,12035 Z-	5410439086431	100	3,32
12 x 40	07991,12040 Z-	5410439086462	100	3,64
12 x 45	07991,12045 Z-	5410439086493	100	4,02
12 x 50	07991,12050 Z-	5410439086523	100	4,34
12 x 55	07991,12055 Z-	5410439086547	100	4,85
12 x 60	07991,12060 Z-	5410439086578	50	1,36
16 x 30	07991,16030 Z-	5410439086691	50	1,30

M x l	art code	EAN	BOX	KG/ BOX
16 x 35	07991,16035 Z-	5410439086721	50	1,39
16 x 40	07991,16040 Z-	5410439086752	50	1,73
16 x 45	07991,16045 Z-	5410439086783	50	1,82
16 x 50	07991,16050 Z-	5410439086813	50	1,99
16 x 55	07991,16055 Z-	5410439086837	50	2,13
16 x 60	07991,16060 Z-	5410439086868	50	2,38
16 x 70	07991,16070 Z-	5410439086882	50	2,80
20 x 40	07991,20040 Z-	5410439086905	50	2,55
20 x 45	07991,20045 Z-	5410439086929	50	2,81
20 x 50	07991,20050 Z-	5410439086943	50	3,10
20 x 55	07991,20055 Z-	5410439086967	50	3,33
20 x 60	07991,20060 Z-	5410439086981	50	3,58
20 x 70	07991,20070 Z-	5410439087001	25	1,03
20 x 80	07991,20080 Z-	5410439407205	25	1,23
20 x 90	07991,20090 Z-	5410439407212	25	1,41

**B**

Din 7991 (01/1986) \*

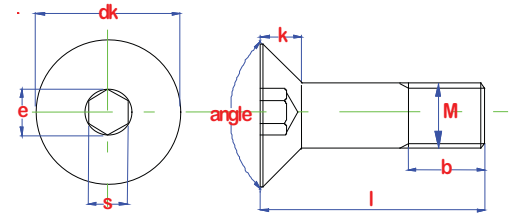
EN 10642 (06/2004)\*\*

HEX. SOCKET CAP SCREW COUNTERSUNK HEAD

BINNENZESKANTBOUT MET VERZONKEN KOP

VIS A 6PC TÊTE FRAISÉE

INNENSECHTSKANTSCHRAUBE SENKKOPF



<b>material</b> : Steel 10.9	<b>materiaal</b> : Staal 10.9	<b>matière</b> : Acier 10.9	<b>Werkstoff</b> : Stahl 10.9
<b>type</b> : standard	<b>type</b> : standaard	<b>type</b> : standard	<b>Typ</b> : normalmass
<b>surface</b> : zinc plated	<b>oppervlak</b> : verzinkt	<b>surface</b> : zingué	<b>Oberfläche</b> : verzinkt

Technical properties / Technische gegevens / Données techniques / Technische Daten

M	angle min.	b1<130	b2>130	b3>200	dk max.	e min.	k max.	s max.
M 3	90	12			6	2.3	1.7	2.1
M 4		14			8	2.87	2.3	2.6
M 5		16			10	3.44	2.8	3.1
M 6		18	24		12	4.58	3.3	4.12
M 8		22	28		16	5.72	4.4	5.14
M 10		26	32	45	20	6.86	5.5	6.14
M 12		30	36	49	24	9.15	6.5	8.175
M 16		38	44	57	30	11.43	7.5	10.175
M 20		46	52	65	36	13.72	8.5	12.212

\* Cancelled since 11/1997 \* Nearly identical  
 \* vervallen vanaf 11/1997 \* Verregaand uitwisselbaar  
 \* Retiré à partir de 11/1997 \*\* presque identique  
 \* Storniert ab 11/1997 \*\* Weitgehend austauschbar

M x l	art code	EAN	BOX	KG/ BOX
3 x 30	07991,03030 Z-	5410439146036	500	4,00
4 x 30	07991,04030 Z-	5410439085038	500	7,25
4 x 35	07991,04035 Z-	5410439304825	200	1,36
4 x 40	07991,04040 Z-	5410439107655	200	1,40
5 x 35	07991,05035 Z-	5410439085281	200	2,16
5 x 40	07991,05040 Z-	5410439085311	200	2,44
5 x 50	07991,05050 Z-	5410439085342	200	3,04
6 x 40	07991,06040 Z-	5410439085632	200	3,44
6 x 45	07991,06045 Z-	5410439085663	200	3,88
6 x 50	07991,06050 Z-	5410439085694	200	4,40
6 x 55	07991,06055 Z-	5410439333146	200	4,84
6 x 60	07991,06060 Z-	5410439085700	200	5,28
6 x 70	07991,06070 Z-	5410439085717	200	6,16
6 x 80	07991,06080 Z-	5410439085724	200	7,04
8 x 50	07991,08050 Z-	5410439085991	200	7,88
8 x 55	07991,08055 Z-	5410439086004	200	8,56
8 x 60	07991,08060 Z-	5410439086011	200	9,44
8 x 65	07991,08065 Z-	5410439086028	200	10,96

M x l	art code	EAN	BOX	KG/ BOX
8 x 70	07991,08070 Z-	5410439204309	200	10,80
10 x 55	07991,10055 Z-	5410439086271	100	3,29
10 x 60	07991,10060 Z-	5410439086301	100	3,75
10 x 70	07991,10070 Z-	5410439169257	100	4,41
10 x 80	07991,10080 Z-	5410439174497	100	4,98
10 x 90	07991,10090 Z-	5410439304580	100	2,85
10 x 100	07991,10100 Z-	5410439086318	50	1,54
12 x 70	07991,12070 Z-	5410439086585	50	1,47
12 x 80	07991,12080 Z-	5410439086592	50	1,83
12 x 90	07991,12090 Z-	5410439185776	50	2,00
12 x 100	07991,12100 Z-	5410439140164	50	2,24
12 x 110	07991,12110 Z-	5410439204521	50	2,42
12 x 120	07991,12120 Z-	5410439335744	50	2,68
16 x 80	07991,16080 Z-	5410439188821	50	3,03
16 x 90	07991,16090 Z-	5410439167970	50	3,58
16 x 100	07991,16100 Z-	5410439177658	50	1,98
20 x 100	07991,20100 Z-	5410439335751	25	1,53

Din 7991 (01/1986) \*

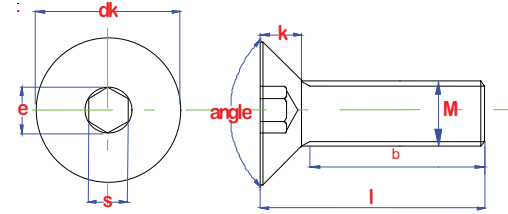
EN 10642 (06/2004)\*\*

HEX. SOCKET CAP SCREW COUNTERSUNK HEAD

BINNENZESKANTBOUT MET VERZONKEN KOP

VIS A 6PC TÊTE FRAISÉE

INNENSECHTSKANTSCHRAUBE SENKKOPF



B



<b>material</b> : Stainless steel A2	<b>materiaal</b> : Inox A2	<b>matière</b> : Inox A2	<b>Werkstoff</b> : Edelstahl A2
<b>type</b> :	<b>type</b> :	<b>type</b> :	<b>Typ</b> :
<b>surface</b> : plain	<b>oppervlak</b> : blank	<b>surface</b> : brut	<b>Oberfläche</b> : roh

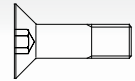
Technical properties / Technische gegevens / Données techniques / Technische Daten

M	angle min.	b1<130	b2>130	b3>200	dk max.	e min.	k max.	s max.
M 3	90	12			6	2.3	1.7	2.1
M 4		14			8	2.87	2.3	2.6
M 5		16			10	3.44	2.8	3.1
M 6		18	24		12	4.58	3.3	4.12
M 8		22	28		16	5.72	4.4	5.14
M 10		26	32	45	20	6.86	5.5	6.14
M 12		30	36	49	24	9.15	6.5	8.175

\* Cancelled since 11/1997 \* Nearly identical  
 \* vervallen vanaf 11/1997 \* Verregaand uitwisselbaar  
 \* Retiré à partir de 11/1997 \*\* presque identique  
 \* Storniert ab 11/1997 \*\* Weitgehend austauschbar

M x l	art code	EAN	BOX	KG/ BOX
3 x 6	07991,03006 A2	5410439104449	200	0,16
3 x 8	07991,03008 A2	5410439104456	200	0,20
3 x 10	07991,03010 A2	5410439084680	200	0,24
3 x 12	07991,03012 A2	5410439084710	200	0,28
3 x 16	07991,03016 A2	5410439084741	200	0,32
3 x 20	07991,03020 A2	5410439084772	200	0,44
3 x 25	07991,03025 A2	5410439084802	200	0,56
3 x 30	07991,03030 A2	5410439104463	200	0,60
4 x 6	07991,04006 A2	5410439123372	200	0,36
4 x 8	07991,04008 A2	5410439123389	200	0,40
4 x 10	07991,04010 A2	5410439084840	200	0,44
4 x 12	07991,04012 A2	5410439084871	200	0,56
4 x 14	07991,04014 A2	5410439343343	200	0,60
4 x 16	07991,04016 A2	5410439084918	200	0,64
4 x 20	07991,04020 A2	5410439084956	200	0,76
4 x 25	07991,04025 A2	5410439084987	200	0,92
4 x 30	07991,04030 A2	5410439085014	200	1,08
4 x 35	07991,04035 A2	5410439085045	200	1,20
4 x 40	07991,04040 A2	5410439085052	200	1,40
4 x 45	07991,04045 A2	5410439144278	200	1,56
4 x 50	07991,04050 A2	5410439139588	200	1,68

M x l	art code	EAN	BOX	KG/ BOX
5 x 8	07991,05008 A2	5410439305440	200	0,68
5 x 10	07991,05010 A2	5410439085069	200	0,76
5 x 12	07991,05012 A2	5410439085090	200	0,88
5 x 16	07991,05016 A2	5410439085137	200	1,08
5 x 20	07991,05020 A2	5410439085175	200	1,28
5 x 25	07991,05025 A2	5410439085205	200	1,52
5 x 30	07991,05030 A2	5410439085236	200	1,76
5 x 35	07991,05035 A2	5410439085267	200	2,04
5 x 40	07991,05040 A2	5410439085298	200	2,28
5 x 45	07991,05045 A2	5410439104470	200	2,52
5 x 50	07991,05050 A2	5410439104487	200	2,76
5 x 60	07991,05060 A2	5410439104494	200	3,64
6 x 8	07991,06008 A2	5410439307406	200	1,00
6 x 10	07991,06010 A2	5410439085380	200	1,16
6 x 12	07991,06012 A2	5410439085410	200	1,24
6 x 16	07991,06016 A2	5410439085458	200	1,56
6 x 20	07991,06020 A2	5410439085496	200	1,92
6 x 25	07991,06025 A2	5410439085526	200	2,24
6 x 30	07991,06030 A2	5410439085557	200	2,60
6 x 35	07991,06035 A2	5410439085588	200	3,00
6 x 40	07991,06040 A2	5410439085618	200	3,56



<b>material</b> : Stainless steel A2 <b>type</b> : <b>surface</b> : plain	<b>materiaal</b> : Inox A2 <b>type</b> : <b>oppervlak</b> : blank	<b>matière</b> : Inox A2 <b>type</b> : <b>surface</b> : brut	<b>Werkstoff</b> : Edelstahl A2 <b>Typ</b> : <b>Oberfläche</b> : roh
---	---	--	--

**B**

M x l	art code	EAN	BOX	KG/ BOX
6 x 45	07991,06045 A2	5410439085649	200	3,96
6 x 50	07991,06050 A2	5410439085670	200	4,44
6 x 60	07991,06060 A2	5410439305235	200	5,40
6 x 70	07991,06070 A2	5410439123396	200	5,36
8 x 10	07991,08010 A2	5410439139533	200	2,36
8 x 12	07991,08012 A2	5410439104500	200	2,52
8 x 16	07991,08016 A2	5410439085755	200	3,16
8 x 20	07991,08020 A2	5410439085793	200	3,64
8 x 25	07991,08025 A2	5410439085823	200	4,16
8 x 30	07991,08030 A2	5410439085854	200	5,08
8 x 35	07991,08035 A2	5410439085885	200	5,44
8 x 40	07991,08040 A2	5410439085915	200	6,12
8 x 45	07991,08045 A2	5410439085946	200	6,68
8 x 50	07991,08050 A2	5410439085977	200	8,04
8 x 60	07991,08060 A2	5410439104517	200	9,44
8 x 70	07991,08070 A2	5410439104524	100	2,83
10 x 16	07991,10016 A2	5410439104548	200	5,40
10 x 20	07991,10020 A2	5410439086059	200	6,00

M x l	art code	EAN	BOX	KG/ BOX
10 x 25	07991,10025 A2	5410439086080	200	7,00
10 x 30	07991,10030 A2	5410439086110	200	8,04
10 x 35	07991,10035 A2	5410439086141	100	2,28
10 x 40	07991,10040 A2	5410439086172	200	9,80
10 x 45	07991,10045 A2	5410439086202	100	2,71
10 x 50	07991,10050 A2	5410439086233	100	3,03
10 x 60	07991,10060 A2	5410439086288	100	3,45
10 x 70	07991,10070 A2	5410439104555	100	4,08
12 x 20	07991,12020 A2	5410439086325	200	8,88
12 x 25	07991,12025 A2	5410439086356	200	10,76
12 x 30	07991,12030 A2	5410439086387	200	12,20
12 x 35	07991,12035 A2	5410439086417	200	14,00
12 x 40	07991,12040 A2	5410439086448	100	3,77
12 x 45	07991,12045 A2	5410439086479	100	3,94
12 x 50	07991,12050 A2	5410439086509	100	4,30
12 x 60	07991,12060 A2	5410439086554	100	5,60
12 x 70	07991,12070 A2	5410439104562	50	1,61
12 x 80	07991,12080 A2	5410439104579	50	1,85

ALLEN KEY FOR SOCKET SCREW

ZESKANTSTIFTSLEUTEL VOOR BINNENZESKANTBOUT

CLE ALLEN POUR VIS À SIX PANS CREUX

SECHSKANTSTIFTSCHLÜSSEL



B



<b>material</b> : Hardened Steel	<b>materiaal</b> : Gehard staal	<b>matière</b> : Acier trempé	<b>Werkstoff</b> : Gehärtet Stahl
<b>type</b> : standard	<b>type</b> : standaard	<b>type</b> : brut	<b>Typ</b> : normalmass
<b>surface</b> : plain	<b>oppervlak</b> : blank	<b>surface</b> : standard	<b>Oberfläche</b> : roh

Technical properties / Technische gegevens /  
Données techniques / Technische Daten

S x	art code	EAN	BOX	KG/ BOX	D7984	D7991	D912	D916	I7379	I7380	L1	L2
1,5 x	00911,0150 S	5410439037945	100	0,10			M1,6-2	M3			45	14
2 x	00911,0200 S	5410439037952	100	0,19	M3	M3	M2,5	M4	M3	M3	50	16
2,5 x	00911,0250 S	5410439037969	100	0,32	M4	M4	M3	M5	M4	M4	56	18
3 x	00911,0300 S	5410439037976	100	0,53	M5	M5	M4	M6	M5	M5	63	20
4 x	00911,0400 S	5410439037983	100	1,02	M6	M6	M5	M8	M6	M6	71	25
5 x	00911,0500 S	5410439037990	100	1,86	M8	M8	M6	M10	M8	M8	80	28
6 x	00911,0600 S	5410439038003	100	2,83	M10	M10	M7-8	M12-14	M10	M10	90	32
8 x	00911,0800 S	5410439038027	50	1,50	M12	M12	M10	M16	M12	M12	100	36
10 x	00911,1000 S	5410439038034	50	2,30	M14-16	M14	M12	M18-20	M14	M14-16	112	40
12 x	00911,1200 S	5410439038041	50	4,25	M18-20	M16-18	M14	M22-24	M16-18	M18-20	125	45
14 x	00911,1400 S	5410439038058	25	1,66	M22-24	M20-22	M16-18		M20-22	M22-24	140	55
17 x	00911,1700 S	5410439152624	25	2,78		M24	M20-22		M24		160	60